

Demographic Study
Public School Enrollments
for
Northern York County School District
650 S. Baltimore Street, Dillsburg, PA 17019



Prepared by



Sundance Associates
117 Greenvale Court
Cherry Hill, NJ 08034

Tel 856-755-0174
Fax 856-755-0176

August 9, 2022

Table of Contents

	Pages
Executive Summary	
INTRODUCTION & BACKGROUND	
Introductory Notes	1
Methodology Notes	2
Public School District Profile	3
School Locations	4
Public & Private School Enrollment	5
GENERAL DEMOGRAPHICS	
Population Growth: Area, County and State	6
Comparative Municipal Population Growth	7
Comparative Populations by Age Group	8
Births: District and Municipal	9-10
HOUSING & NEW STUDENTS	
Residential Sales History	11
Residential Permitting History: District and Municipal	12-13
New Residential Construction	14
Student Multipliers for Housing Types/Bedroom Count	15
Student Yield from New Housing	16
Student Yield by Elementary School	17
METHODOLOGY	
Cohort Survival Projections; Mathematical Analysis	18
Adjustments to Standard Methods	19
Review of Cohort Survival Ratios by Grades	20
Cohort Growth: 2019 Kindergarten to Class of 2031 Gr 12	21
ENROLLMENT PROJECTIONS	
Enrollment History 2000 to 2021	22
Change in Enrollments by Grade Level	23
Grade 12 to Incoming Grade 1 Replacement	24
Reading the Enrollment Charts	25
District Wide Enrollments by Year	26
Elementary Grade K-5 Enrollments	27
Middle Grades 6-8 Enrollments	28
High School Grade 9-12 Enrollments	29
Comparative Enrollments by Grade Level Organization	30
Dillsburg Elementary Enrollments	31
Northern Elementary Enrollments	32
South Mountain Elementary Enrollments	33
Wellsville Elementary Enrollments	34
Comparative Elementary Enrollments	35
 APPENDIX:	
A. Cohort Survival Worksheets	

Executive Summary

The Methodology used in projecting enrollments is the recommended method of the Pennsylvania Department of Education (PDE) and is known as “Cohort Survival” or “Grade Level Progression”.

The Northern York County School District (NYCSD) had a student population of over 3,300 students (Oct 2021) in 6 schools, organized as Grade K-5 Elementary, followed by a Gr 6-8 Middle School, and a Grade 9-12 High School.

The Constituent Municipalities in the School District include the Boroughs of Dillsburg, Franklintown, and Wellsville; as well as the Townships of Carroll, Franklin, Monaghan, Warrington, and Washington.

Non-Public School enrollment levels start at 16.7% in Kindergarten, and 14.4% in Grade 1-4, decreasing to 14.3% in Grades 5-8 and ending at 13.4% in Grades 9-12. .

Population Trends are such that the school district area had a population of only 18,671 in 2000 which increased to 26,430 in the peak year of 2020, growing 12.9% from 2000 to 2010 and by 25.4% from 2010 to 2020. Nearly all growth is in Carroll and Franklin Townships.

Population by Age Group from 2010 to 2020 reveals a decrease in Pre-School, School Age and Childbearing age groups despite general population growth.

Live Births in the district have been volatile since year 2005 with a current 6-year average of 232. The 6-year trend is for 1 more births per year.

Historic Residential permitting for new construction was at 218 units in year 2006, and decreased to a recent 6-year average of 57 units per year.

Future Residential Permitting 2022-26 is anticipated to rise above the recent 6-year average of 57 units to over 140 units per year and include a significant increase in Multi-Family housing.

Residential Sales following the Housing Recession rose from 138 in 2008 to 324 in 2021, significantly higher than proposed new housing.

School Age Children will be generated by this significant increase in anticipated permitting such that 277 students from new Multi-Family housing are added to the standard projection based on planned occupancies.

No students are added from Single Family housing which level continues as in the past and is “built into” the current Survival Rates.

The NYCSD, with a year 2020 constituent population of 26,430 continues to grow at a moderately increasing rate.

District-wide Enrollment will increase by 188 students, to just over 3,500 students, despite the influx of 277 students from new housing.

Less accurate 6th to 10th year extended projections are not reported in this summary.

Elementary School Enrollment for Grades K-5 will increase by 85 students to 2,262, despite the addition of 128 students from new housing.

Middle School Enrollments for Grades 6-8 will increase by 87 students, to 850 students, despite the influx of 64 students from new housing.

High School Enrollments for grades 9-12 will increase by only 16 students, to 1,084 students, despite the influx of 85 students from new housing.

A comparison of future enrollment and building capacity, is as follows;

Capacity And Enrollment Comparison

	Capacity	Enroll 2026	Excess Capacity	
Elementary School				
Dillsburg	516	529	-13	-2%
Northern	388	332	56	14%
South Mountain	522	478	44	8%
Westville	280	236	44	16%
	1,706	1575	131	8%
Middle School				
Northern MS	815	850	-35	-4%
High School				
Northern HS	1,794	1,084	710	40%
TOTAL	4,315	3,509	806	

Sundance Associates has been retained by the Northern York County School District to prepare a demographic study of the district and to project enrollments from school year 2022-23 to school year 2026-27.

Actual enrollment data (Fall 2016– 2021) is from the official annual October submissions to PDE. Birth data is from the official web site of the Pennsylvania Department of Health.

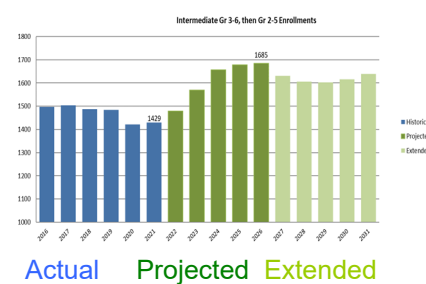
The actual enrollments for this demographic study begin with the October 1 enrollment reports for the 2016-17 school year and end with the October 1 enrollment reports for 2021-22 school year. In projection graphs, the actual enrollments appear in blue.

The five-year enrollment projections begin with the 2022-23 school year and end with the 2026-27 school year and appear in dark green. The extended and less accurate 6-10 year projection is in light green.

Extensive data and graphics that support understanding of general demographic trends are provided, however, it is important to understand that they are for support purposes only.

- This projection is made based on Live Births and Historic Enrollment, *the two primary determinants of future enrollments*.
- The standard projection is then adjusted with an overlay of students from new housing.

The information in this demographic report is suitable for inclusion in any document to be forwarded to the Pennsylvania Department of Education for matters concerning school facilities.



Although many techniques have been used to predict demographic trends including future enrollment, the method most widely employed and accepted for predicting future school enrollment is the “**Cohort-Survival**” method. **This method is considered the most reliable.** It captures the key determinants of enrollment, yet also allows for changes in historical trends, is relatively simple to apply and the data requirements are reasonable and usually easily fulfilled.

The major assumption underlying the cohort survival method is that the past to a large extent is a reasonable predictor of the future: that is, given the number of births and historical enrollment, the net effect of all other factors remain in relative balance.

However, any of the following factors could cause a significant change in projected student enrollments, and adjustments to the standard methodology may be made for:

- Boundary adjustments, school openings or consolidation
- Changes/additions in program offerings
- Preschool programs
- Change in grade configuration
- General Economic Conditions, Interest rates/unemployment shifts
- Magnet/Charter/Private school opening or closure
- Zoning changes
- New housing activity; planned, but not built, housing
- In and Out-Migration

The cohort-survival method requires the calculation of the ratio of the number of children in one grade in one year compared to the number of children who “survive” the year and enroll in the next grade the following year (see detailed Mathematical Analysis, page 14). Fluctuations in such data from year to year create a pattern over time from which an average rate may be calculated to project enrollment.

The reliability of the cohort-survival method is related to both the number of years one is projecting as well as the relative volatility of the historical data. Projections covering five years or less, especially at the elementary level, tend to be more reliable than projections going out more than five years. In addition, in some communities the numbers of births, population, household size, and net migration rates have held relatively steady which increases the reliability of the results. In other communities, one or more such variables exhibit extreme variation leading to less reliable results.

Additional exposition of the *mathematical* base to Cohort Survival methods is found on page 19.

The major assumption underlying the cohort survival method is that the past to a large extent is a reasonable predictor of the future.

The most important factors are Live Birth counts and historical, grade level Enrollment counts.



The Institute of Educational Sciences, 1997 publication “Accuracy of Enrollment Forecast Methods”, reviews three special-purpose forecasting methods ... and three methods of universal applicability (the cohort-survival, percentage- survival, and law-of-growth methods) to help administrators grasp enrollment forecasting technicalities. **A comparison shows that the cohort-survival method consistently produced lower error rates for each five-year projection for median or mean error rates.**

The Northern York County School District is a midsized, suburban public school district in York County, PA. It includes the Boroughs of Dillsburg, Franklintown, and Wellsville; as well as the Townships of Carroll, Franklin, Monaghan, Warrington, and Washington.

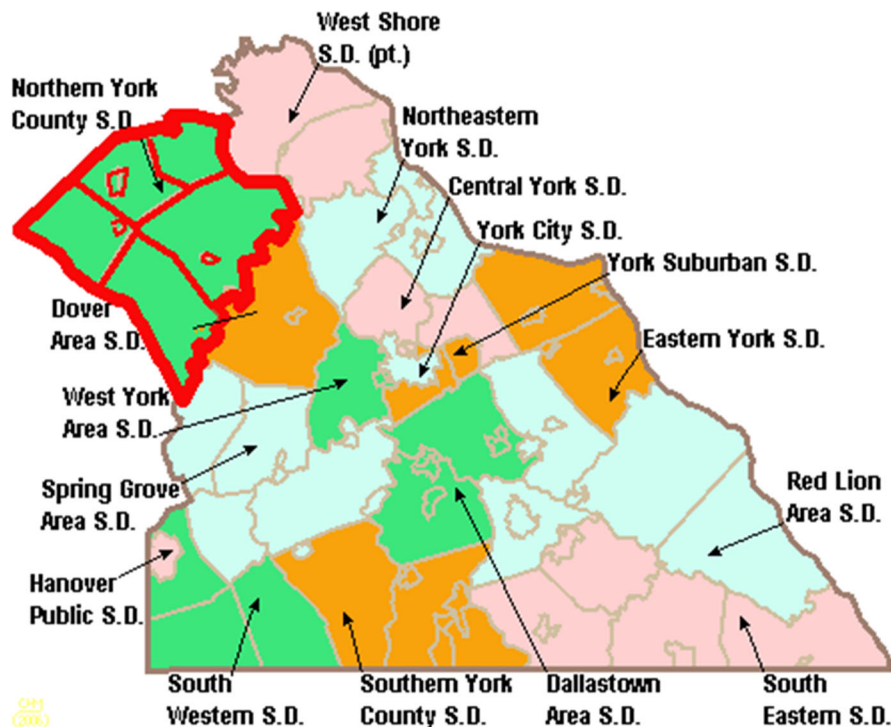
The school district has a population of 21,073, according to the 2010 U S Census. By 2020, the district's population had increased to 26,430 people.

Northern York County School District operates: four K-5th elementary schools: (Dillsburg Elementary School, Northern Elementary School, South Mountain Elementary School, Wellsville Campus); Northern Middle School (6th–8th), and Northern High School (9th–12th). High school students may choose to attend Cumberland Perry Area Vocational Technical School for training in the construction and mechanical trades. Special education was provided by the district and the Capital Area Intermediate Unit #15.

In 2012, the Washington Township Educational Coalition filed a petition with the Court of Common Pleas of York County, Pennsylvania, to initiate the process of transferring Washington Township from the Dover Area School District to the Northern York County School District. The State Board of Education issued an order on March 10, 2021, transferring Washington Township to the Northern York County School District effective with the 2021-2022 school year.

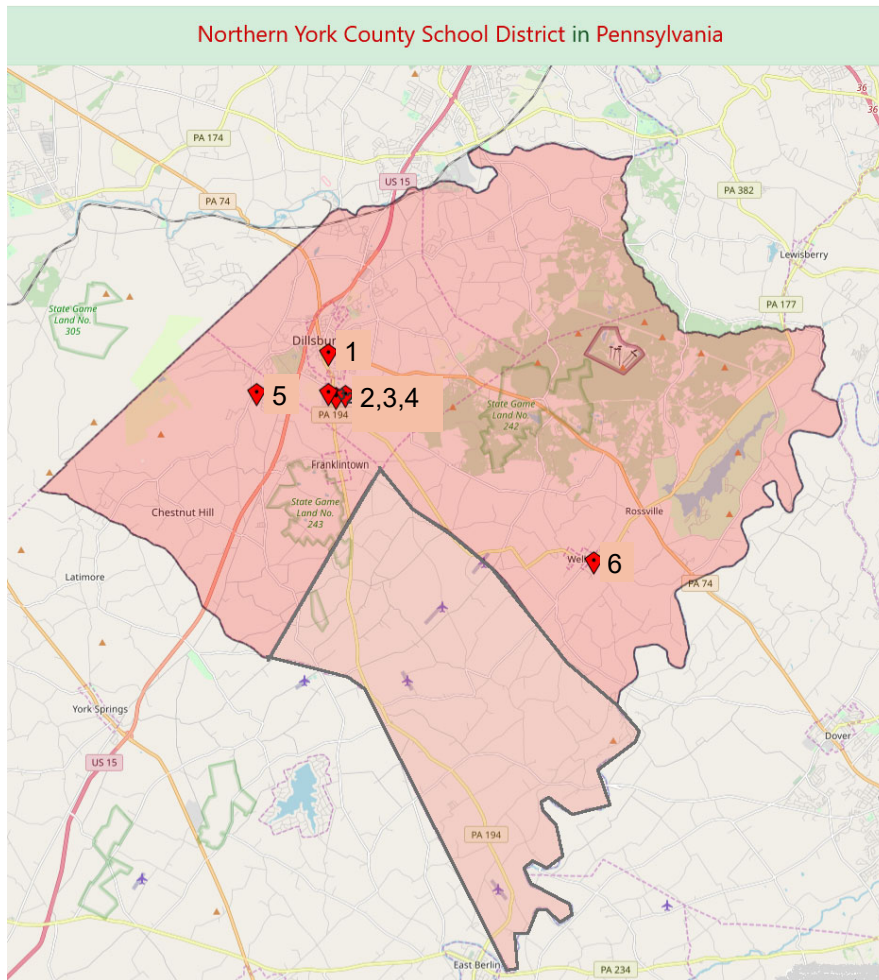


The Northern York County School District serves over 3,300 students in grades K-12.



The Northern York County School District is in north-western York County , and is outlined in red with green fill..

Profile: School District



Washington Township (lower area on map) joined the district in Fall 2021 enrolling 188 students.

Elementary students were assigned to both Northern (2) and Westville (6) Elementary Schools.

School Name	Address	City	State	ZIP	Grade
1 Dillsburg El Sch	202 S Chestnut St	Dillsburg	PA	17019	KG-5
2 Northern El Sch	657 S Baltimore St	Dillsburg	PA	17019	KG-5
3 Northern HS	653 S Baltimore St	Dillsburg	PA	17019	9-12
4 Northern MS	655 S Baltimore St	Dillsburg	PA	17019	6-8
5 South Mountain El Sch	711 South Mountain Road	Dillsburg	PA	17019	KG-5
6 Wellsville Campus	1060 Zeigler Road	Wellsville	PA	17365	KG-5

Public & Private Schools

Comparative Enrollment 2015-20

The following data is an average of the period 2015-20 (latest available) from the American Community Survey 5-Year estimates. The data is presented as the survey collates the information which is not as the District organizes the schools.

Identification as Public or Private is by self selection of the survey responder .

Kindergarten enrollment in the School District is significantly higher than in the County or State.

Elementary enrollment in the School District is similar to the State and lower than the County.

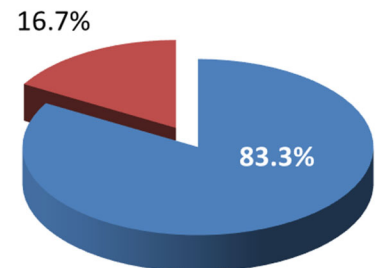
Middle School enrollment in the School District is higher than in the County or State.

High School enrollment in the School District is higher than in the County or State.

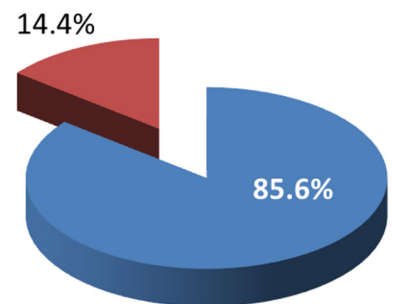
		Penn	York Co	NYCSD
Kindergarten	Public	83.3%	92.8%	98.2%
	Private	16.7%	7.2%	1.8%
Elementary Gr 1-4	Public	85.6%	90.3%	85.4%
	Private	14.4%	9.7%	14.6%
Middle Gr 5-8	Public	85.7%	88.8%	90.4%
	Private	14.3%	11.2%	9.6%
High Sch Gr 9-12	Public	86.6%	90.3%	92.8%
	Private	13.4%	9.7%	7.2%

SOURCE: 2020: ACS 5-Year Estimates Subject Tables S1401

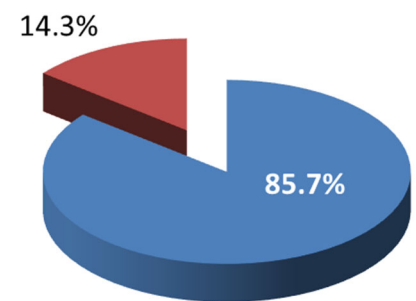
Kindergarten



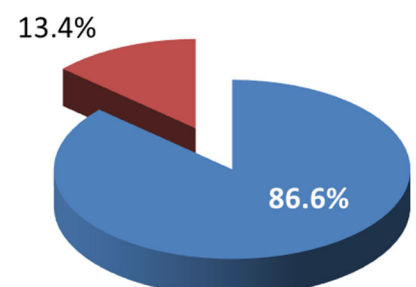
Elementary Sch Gr 1-4



Middle Sch Gr 5-8



High Sch Gr 9-12





Population Growth

Comparative School District,
County and State

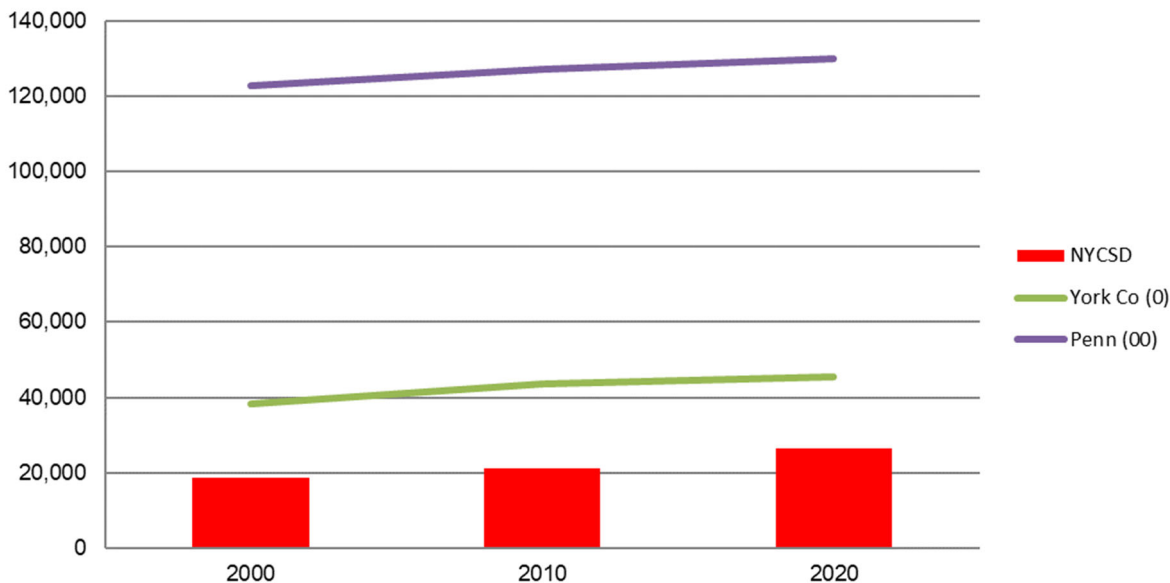
The NYCSD population was 26,430 persons, as of the US Census 2020, after including Washington Township, up by 25.4% from 21,073 in 2010.

The NYCSD population, with Washington Township included, was 26,430 persons as of the US Census 2020.

The 2000 and 2010 counts do not include Washington Township.

	2000	2010	2020
No. York Co SD	18,671	21,073	26,430
York Co	381,751	434,972	456,438
Pennsylvania	12,281,054	12,702,379	13,002,700

District-County-State Comparative Population Growth



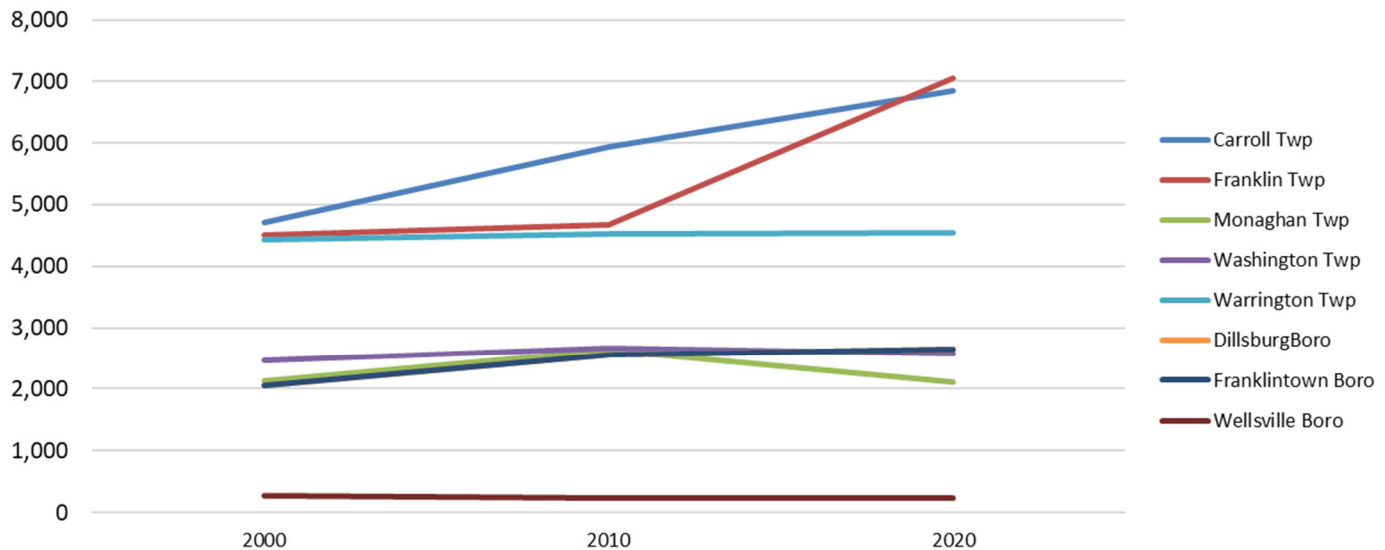
	2000-10	2010-2020
SD Growth	12.9%	25.4%
County Growth	13.9%	4.9%
State Growth	3.4%	2.4%



Population Growth Municipal Comparison

Municipality	Counts			Growth	
	2000	2010	2020	2000-10	2010-20
Carroll Twp	4,715	5,939	6,853	1,224	914
Franklin Twp	4,515	4,678	7,056	163	2,378
Monaghan Twp	2,132	2,630	2,105	498	-525
Washington Twp	2,460	2,673	2,576	213	-97
Warrington Twp	4,435	4,532	4,552	97	20
DillsburgBoro	2,063	2,563	2,653	500	90
Franklintown Boro	532	489	407	-43	-82
Wellsville Boro	279	242	231	-37	-11
Combined	21,131	23,746	26,433	2,615	2,687

Municipal Populations



Growth in Carroll Twp. continued near 100 persons per year from 2000 through 2010 to 2020.

Franklin Township population growth surged from 16 per year between 2000 and 2010 to 238 persons per year between 2010 and 2020.

Monaghan Township, which had grown by 498 persons from 2000 to 2010, lost 525 persons between 2010 and 2020.

Minor losses were also found in Washington Township and Franklintown and Wellsville Boroughs.



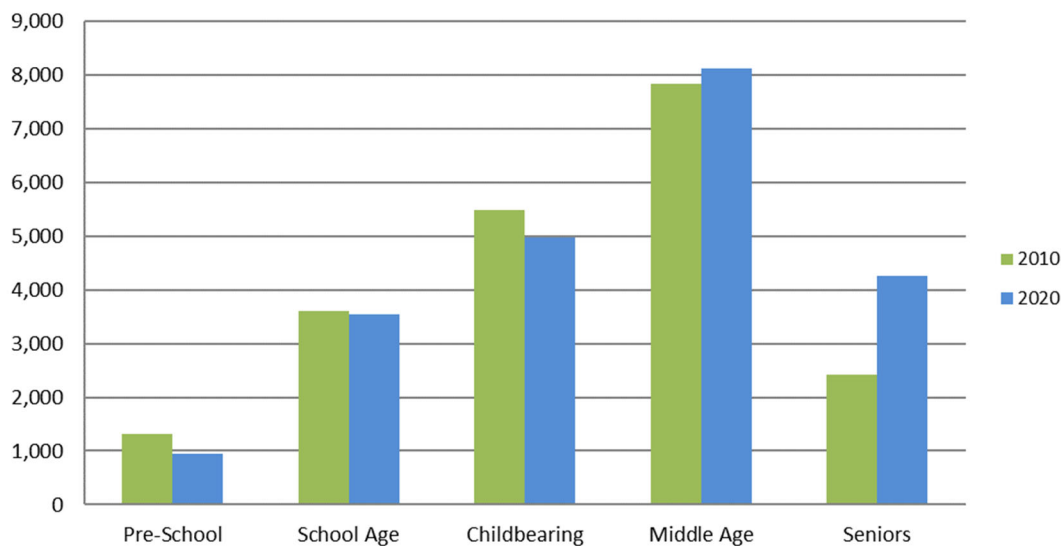
Comparative Population by Age Groups

School District: 2010-2020

Type	Age	2010		2020
Pre-School	0-4	1,311	-353	958
School Age	5-17	3,613	-69	3,544
Childbearing	18-39	5,490	-509	4,981
Middle Age	40-64	7,833	291	8,124
Seniors	65 +	2,415	1846	4,261
		20,662	1206	21,868

Percents	1990	2000
Pre-School	6.34%	4.38%
School Age	17.48%	16.21%
Childbearing	26.57%	22.78%
Middle Age	37.91%	37.15%
Seniors	11.69%	19.49%
	100%	100%

Population by Age Group 2010 and 2020



Pre School Age decreased by an average of 35 per year between 2010 and 2020 in advance of an enrollment decline.

School Age Group decreased by an average of only 7 per year from 2010 to the 2020, evidencing a stable enrollment

Childbearing Age decreased by an average 50 per year from 2010 to the 2020, suggesting the possibility of decreasing or stable Births.

Middle Age increased by an average of 29 per year from 2010 to the 2020.

Seniors, increased by an average of 184 per year from 2010 to the 2020.



District Annual Births

The number of babies born to families who reside in the district is a significant factor effecting enrollments. Birth counts from “5 years earlier” are used for the “Birth to Kindergarten” Survival Ratios in the standard Cohort Survival projection method. Births are the starting point for all cohorts in every year.

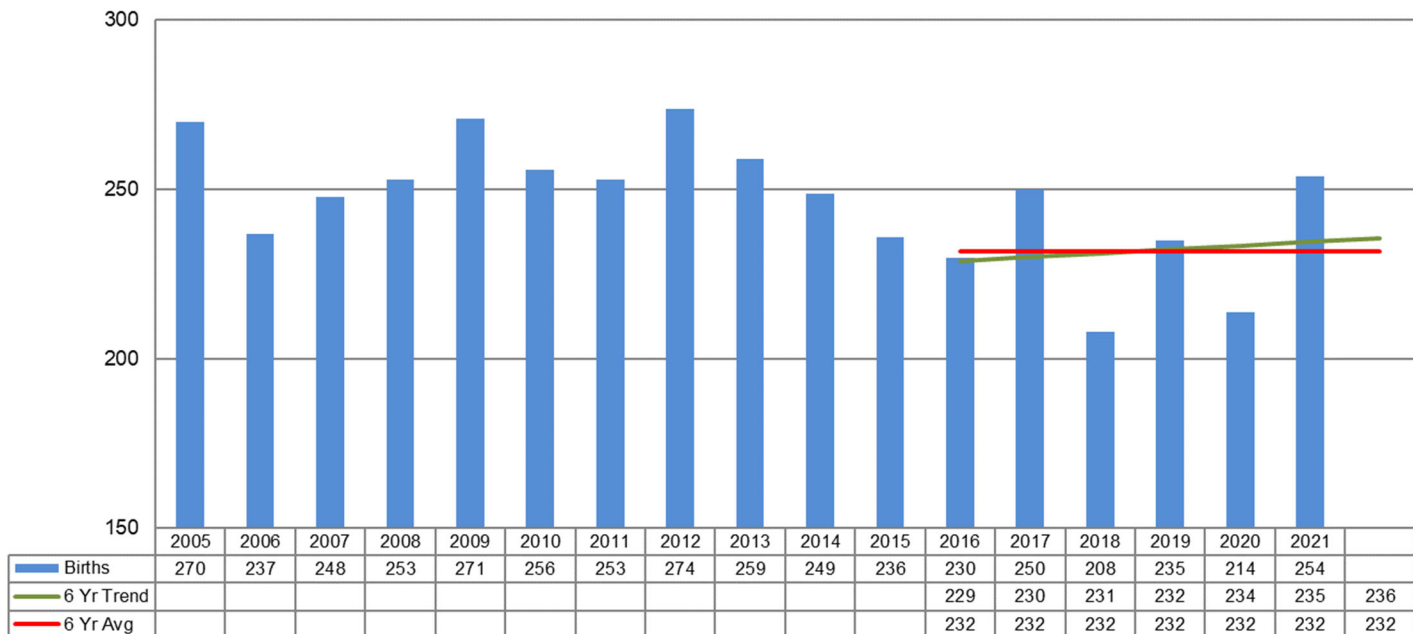
Combined Births in the area municipalities have volatile in the 6-year projection period. The 6-year trend, is perhaps more indicative of recent levels of birth. The 6-year trend is for about 1 more births every year (green line).

However births could easily turn around and start an increase. It is for that reason that **the Cohort Survival methodology is based on averages**. The 6-year average is from the same years as the 6-years of actual enrollments that is the basis of the Cohort Survival projection used in this study. The 6-year average is 232 births per year (red line).

Births have been averaging 232 per year for the last 6 years paralleling the last 6 years of actual enrollment data on which the projection is based.

The 6-year trend is for about 1 more birth per year.

NYCSD Combined Calendar Year Births



SOURCE: Births Data from Pa Department of Health found at <http://www.statistics.health.pa.gov/Pages/default.aspx#.VckGXzZRGUK>



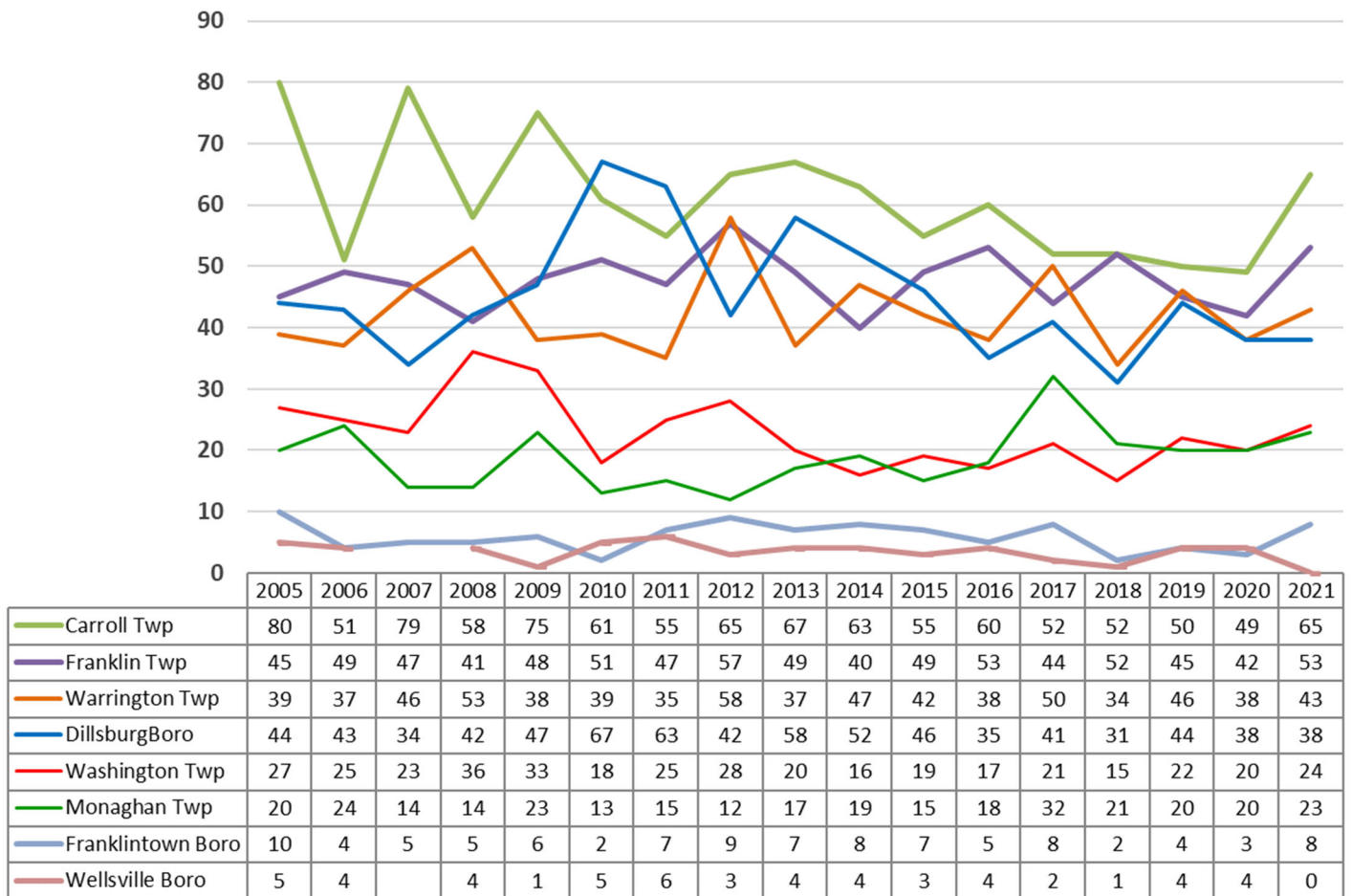
Municipal Annual Births

Live Births in each contributing municipality are provided below.

Live Births are generally trending at less than 1 Birth plus or minus (-0.3 to +0.4) per year, in all municipalities except Washington Township that is trending +1.1 additional Births per year.

All municipalities saw an increase in Births from 2020 to 2021 except

Births by Municipality



Source: Pa Dept. of Health at http://www.portal.state.pa.us/portal/server.pt/community/health_statistics_and_research/11599

Residential Sales History

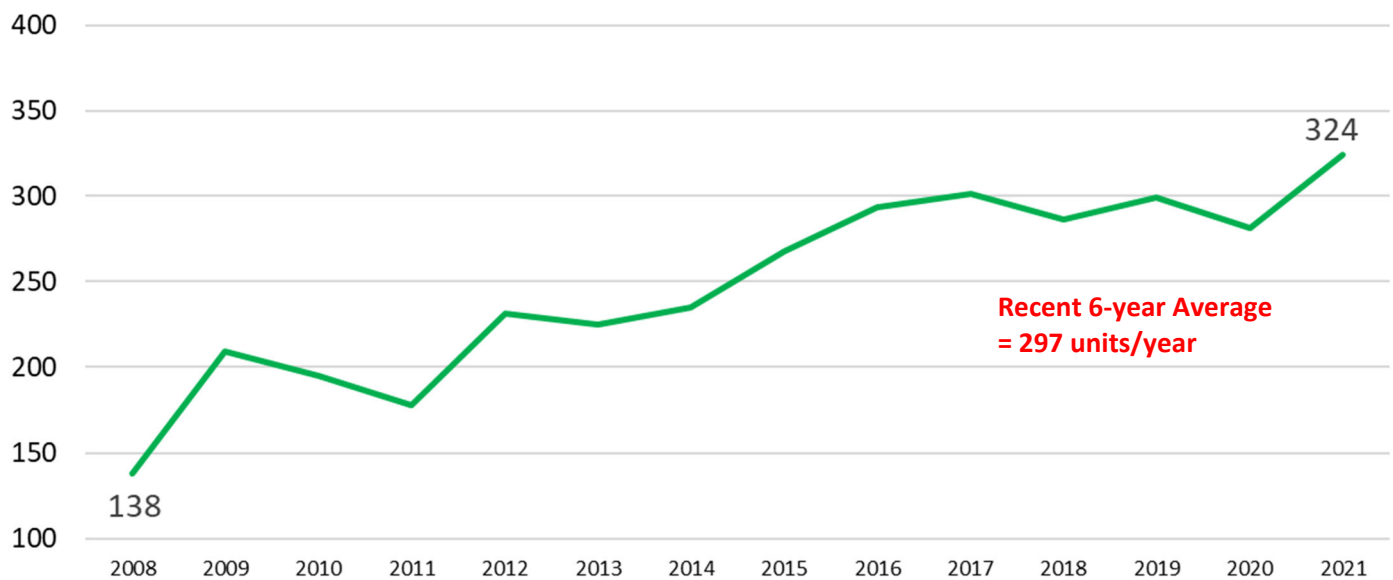


Residential Sales decreased alongside the 2008 Housing Recession to a low of 138 units in year 2008. Sales began to rebound in 2009, peaked above Pre-Recession levels in year 2021 at 324 units.

The recent 6-year average is 297 sales per year.

324 units sold in 2021 represents **0.34%** of all available housing units.

District-wide Residential Sales



SOURCE: Compliments of Paul Hayes Group-eXp Realty



Residential Permitting History for New Construction

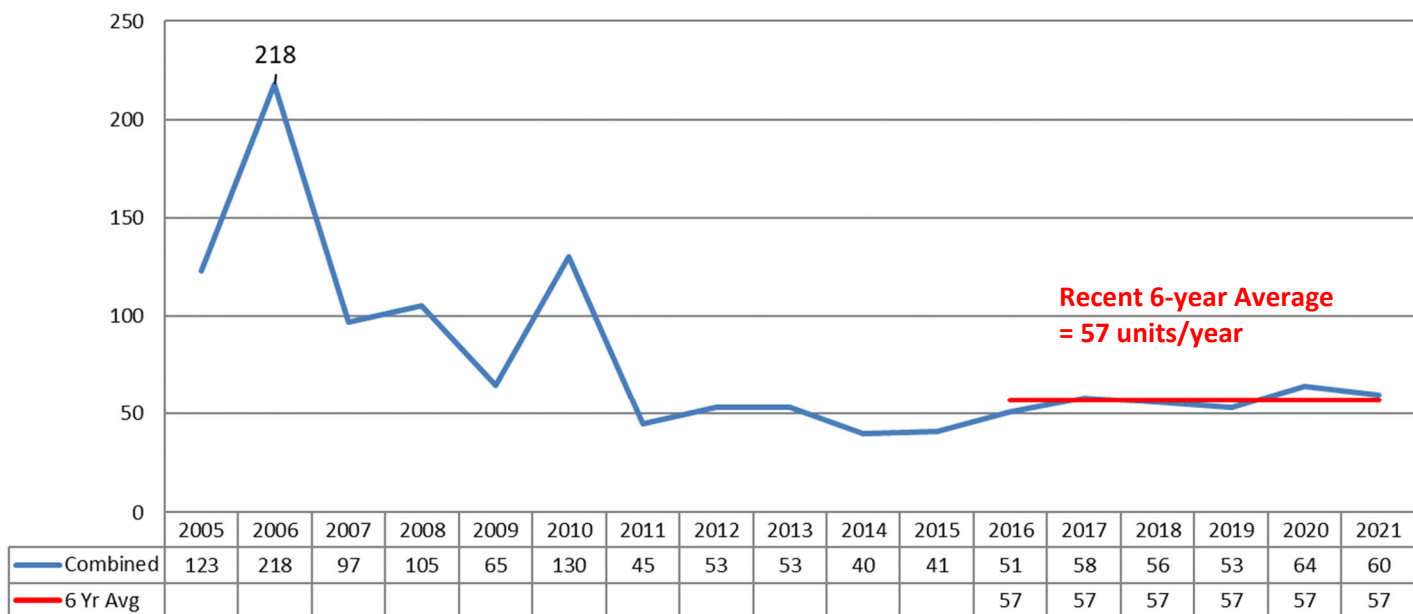
A Building Permit is obtained by a developer after approval of a major sub-division, and when construction of a “next phase” of residential units is eminent. Residential Building Permits are often correlated with population growth in a community.

As with the nation, residential development in the District had been depressed for several years prior to 2008. The northern York County areas is still recovering to pre 2008 levels.

Residential permitting for Single Family units has been a 6-Year Average of 57 units per year.

Residential permitting for Multi-family units has been a 6-Year Average of 0 units per year.

Residential Building Permits 2005-21



SOURCE: <http://socds.huduser.org/permits/index.html> and Local Planning Officials

The recent 6-year average of all Residential Building Permits is 57 units per year of which ALL are for Single Family units.

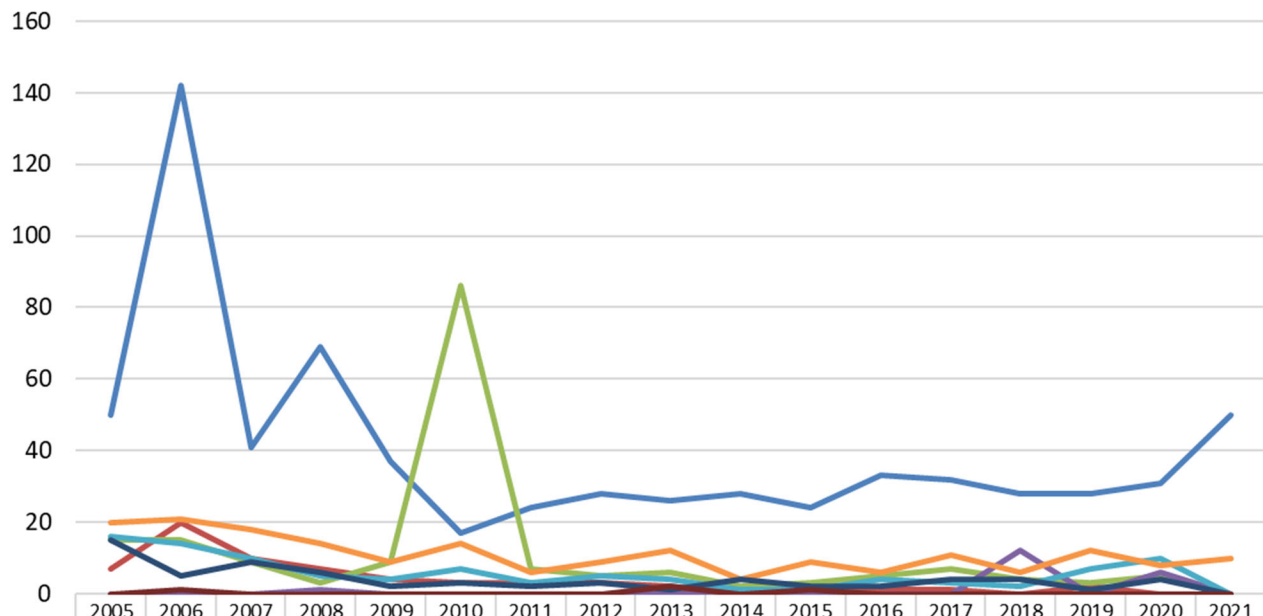


Residential Permitting History by Municipality

	6-Yr Avg
Carroll Twp	33.7
Franklin Twp	4.0
Monaghan Twp	4.3
Washington Twp	2.5
Warrington Twp	8.8
DillsburgBoro	0.7
Franklinton Boro	3.0
Wellsville Boro	0.0
Combined	57.0

Only Carroll Township has had significant Residential Permitting in the last 6 years.

Building Permits by Municipality



	2005	2006	2007	2008	2009	2010	2011	2012	2013	2014	2015	2016	2017	2018	2019	2020	2021
Carroll Twp	50	142	41	69	37	17	24	28	26	28	24	33	32	28	28	31	50
Dillsburg Boro	7	20	10	7	4	3	3	3	2	0	1	1	1	0	2	0	0
Franklin Twp	15	15	9	3	9	86	7	5	6	2	3	5	7	4	3	5	0
Franklin Boro	0	0	0	1	0	0	0	0	0	1	0	0	0	12	0	6	0
Monaghan Twp	16	14	10	5	4	7	3	5	4	1	1	4	3	2	7	10	0
Warrington Twp	20	21	18	14	9	14	6	9	12	4	9	6	11	6	12	8	10
Washington Twp	15	5	9	6	2	3	2	3	1	4	2	2	4	4	1	4	0
Wellsville Boro	0	1	0	0	0	0	0	0	2	0	1	0	0	0	0	0	0

SOURCE: <http://socds.huduser.org/permits/index.html> and Local Planning Officials



Future Residential Permitting for New Construction

Future Housing

			Unit	1	2	3	4	5	Total
		Type	Bdrms	Count	2022	2023	2024	2025	2026
Carroll Township									
1	Carroll Townhouses	TH	3 Bdrm	95			30	30	35
	<i>Ore Bank Rd at Siddonsburg Rd</i>						30	30	35
2	Chestnut Grove	SF	4 Bdrm	61		15	15		
	<i>Chestnut Grove Rd at Carroll Dr.</i>	Duplex	3 Bdrm	12				15	15
	<i>Age-Targeted</i>			73		15	15	15	15
3	Village at South Mountain	Apt	0 Bdrm	21			7	7	7
	<i>Logan Rd & Rt. 15</i>		1 Bdrm	152			50	51	51
			2 Bdrm	69			23	23	23
				242			80	81	81
4	Ironwood	SF	4 Bdrm	85		21	21	21	22
	<i>Old York Rd at Ore Bank Rd</i>					21	21	21	22
Monaghan Twp									
5	Gentleman Jack	SF	4 Bdrm	25		10	10	5	
						10	10	5	
6	Mowery Orchard	SF	4 Bdrm	19			4	7	8
							4	7	8
Dillsburg Boro									
7	Winfield	TH	3 Bdrm	178			60	60	58
	<i>405 So. Baltimore St.</i>	TH	3 Bdrm	96					
							60	60	58
	Single Family				0	46	50	48	45
	Multi Family				0	0	170	171	174
	TOTAL				0	46	220	219	219
									704

A total of 704 units from 7 projects in Carrol Township, Monaghan Township and Dillsburg Boro will bring additional students to district.

73% of the new housing is Multi-Family.



Student Multipliers for Unit Types

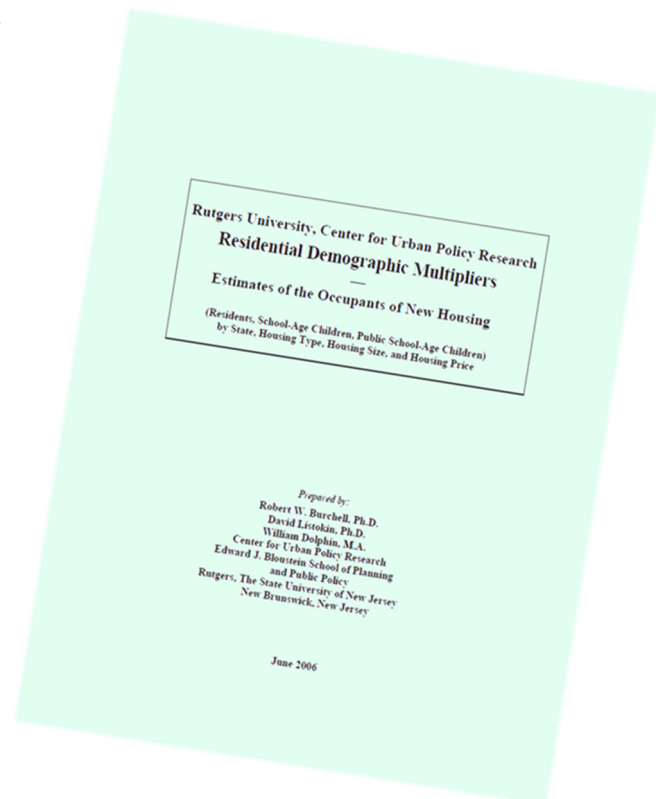
To estimate the number of School Age Children (SAC) or the Public School Age Children (PSAC), “multipliers” for unit types and bedroom counts are applied to the number of units.

After determination of the number of School Age Children, they are scheduled for entry into the school system based upon the construction and occupancy schedule.

The source for the multipliers is ***Who Lives in Pennsylvania Housing, a Quick Guide to Pennsylvania Residential Demographic Multipliers*** by the Center for Urban Policy Research of the Edward J. Bloustein School of Planning and Public Policy at Rutgers, The State University of New Jersey, as developed from the 2000 U. S. Census.

Five different multipliers are used in this study for Types of Housing (Rental Apartments Single Family and Townhouses) and Number of Bedrooms.

Type	# Bdrm	Mult.
TH	3 Bdrm	0.570
Apt	0 Bdrm	0.050
Apt	1 Bdrm	0.250
Apt	2 Bdrm	1.200
SF	3-4 Bdrm	1.000



Student Yield from New Construction

ALL School Age Children

<u>Carroll Township</u>	Type	Bdrms	SAC/ Unit	2022	2023	2024	2025	2026	Total	
1 Carroll Townhouses <i>Ore Bank Rd at Siddonsburg Rd</i>	TH	3 Bdrm	0.57			17.1	17.1	20.0	54	So Mtn
						17.1	17.1	20.0	54	
2 Chestnut Grove <i>Chestnut Grove Rd at Carroll Dr.</i>	SF	4 Bdrm	0.00		0.0	0.0			0	Dillsburg
<i>Age-Targeted</i>	Duplex	3 Bdrm	0.00				0.0	0.0	0	
					0.0	0.0	0.0	0.0	0	
3 Village at South Mountain <i>Logan Rd & Rt. 15</i>	Apt	0 Bdrm	0.05			0.4	0.4	0.4	1	Dillsburg
		1 Bdrm	0.25			12.5	12.8	12.8	38	
		2 Bdrm	1.20			27.6	27.6	27.6	83	
						40.5	40.7	40.7	122	
4 Ironwood <i>Old York Rd at Ore Bank Rd</i>	SF	4 Bdrm	1.00		21.0	21.0	21.0	22.0	85	
					21.0	21.0	21.0	22.0	85	
<u>Monaghan Twp</u>										
5 Gentleman Jack	SF	4 Bdrm	1.00		10.0	10.0	5.0		25	
					10.0	10.0	5.0		25	
6 Mowery Orchard	SF	4 Bdrm	1.00			4.0	7.0	8.0	19	
						4.0	7.0	8.0	19	
<u>Dillsburg Boro</u>										
7 Winfield <i>405 So. Baltimore St.</i>	TH	3 Bdrm	0.570			34	34	33	101	Northern
	TH	3 Bdrm	0.570							
						34	34	33	101	
Single Family				0.0	31.0	35.0	33.0	30.0	129	
Multi Family				0.0	0.0	91.8	92.0	93.7	277	
TOTAL				0.0	31.0	126.8	125.0	123.7	406	

Cont'd next page



Student Yield from New Construction by School

No students from new **Single Family** housing are added to the projection. The permitting levels for SF housing continues as in the past and its impact on enrollment is "built into" the Cohort Survival Rates

All students from Multi-Family housing are added to the projection. The construction of multi-family housing is a new trend that has not impacted enrollments in the past.

54 students from the Carroll Townhouses are added to the South Mountain ES attendance area and 122 students from the Village at South Mountain are added to the Dillsburg ES attendance area.

101 students from the Winfield Townhouses are added to the Northern Elementary School in the 5 year Projection. An additional 55 students are added to Northern Elementary School in the 6th and 7th years of the Extended Projection.

Village at South Mountain <i>Logan Rd & Rt. 15</i>	Dillsburg Elem	122 Students
Winfield Townhouses <i>405 So. Baltimore St.</i>	Northern Elementary	101 + 55 Students
Carroll Townhouses <i>Ore Bank Rd at Siddonsburg Rd</i>	South Mtn Elem	54 Students



Cohort Survival Methodology

Mathematical Analysis

Cohort Survival is the name given to the method of projecting enrollments which is recommended by the Pennsylvania Department of Education. The most important terms, concepts and methodology are illustrated herein.

Cohort Survival projections are based on historic enrollment and birth data in the individual school district and incorporate six years of demographic data. They are considered very reliable where trends are expected to continue, without significant change in housing or birth rates.

Cohort is the name given to the common groups of children originally born in a given year and progressing, together, through the school system, one grade level to the next.

Survival Ratios refer to the number of students from one year and grade level who “survive to” or enter the next grade level the following year.

For example, in the sample partial table in the side bar, historic enrollments show 328 students in 1st Grade in year 2013-14, following a 289 student Kindergarten in year 2012-13. This yields a Kindergarten to First Grade **Survival Ratio** of 1.135 (or $328 \div 289$). Another expression of the Survival Ratio would be that 113% of the Kindergarten students “survived” to 1st Grade.

Similar calculations are made for “survival” from Births Five Years Earlier to Kindergarten, and for each and every grade level transition in each and every year of historical enrollments which are used. In general, six years of historic data will yield five Survival Ratios for each grade level change, Birth to K, K to 1, 1 to 2, etc.

The **Average Survival Ratio** is then calculated for each grade level change. In the side-bar example 1.165 is the 6-year average Kindergarten to Grade 1 ratio and 1.051 is the 6-year Grade 1 to Grade 2 Survival Ratio.

The sample projections use the past school year 2016-17 enrollments, at the bottom of the Historic chart, as a base year. The Average Cohort Survival Ratios are applied to those base year enrollments and to the actual and estimated births, and projected into the next year, one grade level higher.

In the side-bar example 331 Kindergarten students in 2018-19 survive at a rate of 1.165 as a 2019-20 First Grade of 386 students. This similar projection is made across all grade levels for a 5-year period. Finally, the individual grade level enrollment projections are summed across each year to determine district-wide enrollments in that year.

Enrollment projections have been made using the Cohort Survival method.

Historic Enrollments

School Year	Births		K		1st Gr.	2nd Gr.	3rd Gr.
	5 Sch Yrs. Ago	"s"	"s"	"s"	"s"	"s"	"s"
2011-12	169	1538	260	308	327	404	
2012-13	175	1651	289	313	338	336	
2013-14	132	2,091	276	328	319	351	
2014-15	131	1915	251	308	340	328	
2015-16	143	1720	246	290	327	362	
2016-17	187	1545	289	299	302	346	
6 Yr Avg SR		1.744	1.165	1.051	1.043		

Projected Enrollments

5-YR PROJECTIONS		K		1st Gr.	2nd Gr.	3rd Gr.
School Year	5 Sch Yrs. Ago	"s"	"s"	"s"	"s"	"s"
2017-18	185	1744	323	337	314	315
2018-19	190	1744	331	376	354	328
2019-20	187	1744	326	386	395	369
2020-21	181	1744	316	380	406	412
5 Yr Average			324	368	399	423
2021-22	186	1744				



Cohort Survival Methodology

Adjustments and Distribution to
Elementary Attendance Areas

Residential Construction

An adjustment is made for accelerated housing construction. Schedules of new housing units by project were documented on pages 14. Schedules of Student Yield from New Housing are found on page 16.

Students are added to the standard projection in an overlay method for each year, equally divided across 13 grade levels and those added students are then “survived” to the next year at the district’s grade level Survival Rates. The following years’ Student Yield is added and the overlay process repeats.

Modifications were made to the Standard projection for the impact of additional students from Multi-family Residential Developments.

And Grade Level Survival Rates in the last year of Actual enrollments were adjusted to acknowledge the new arrival of the Washington Township students.

Students from Washington Township

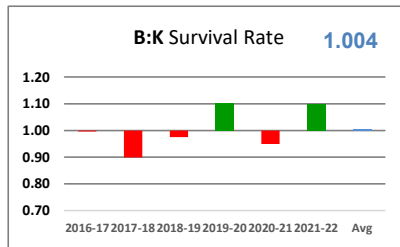
188 students are added to the 2021-22 school year from Washington Township. These students were at all grade levels and would impact the 2020-21 to 2021-22 Grade Level Survival Rates. Those Survival Rates were adjusted to include only the prior year’s enrolled students.

New Students by Elementary Attendance Area

Vill of South Mountain <i>Logan Rd & Rt. 15</i>	Dillsburg Elem	122 Students
Winfield Townhouses <i>405 So. Baltimore St.</i>	Northern Elementary	101 + 55 Students
Carroll Townhouses <i>Ore Bank Rd at Siddonsburg Rd</i>	South Mtn Elem	54 Students



Cohort Survival Rates Standard Projection

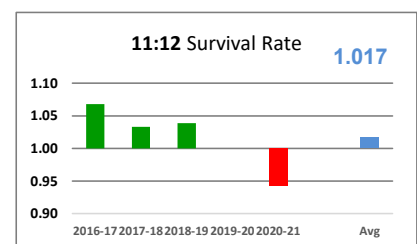
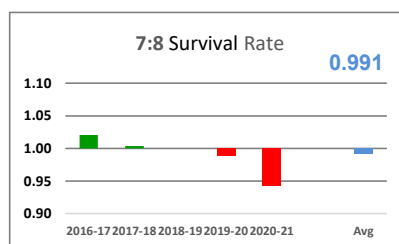
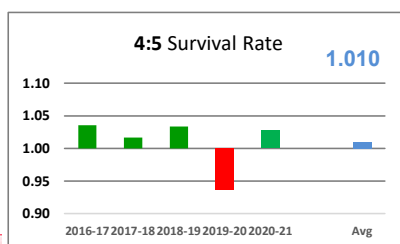
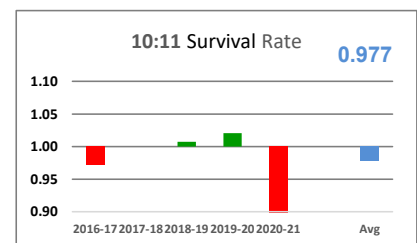
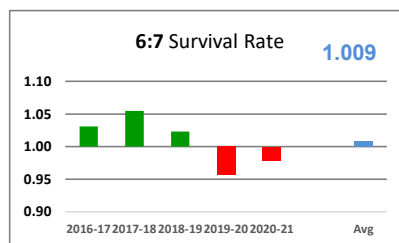
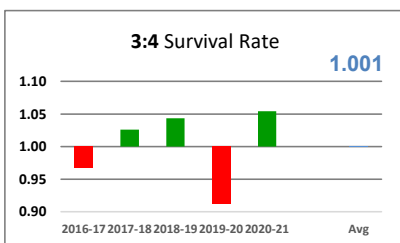
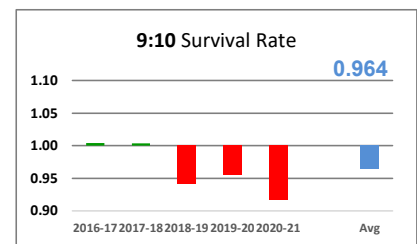
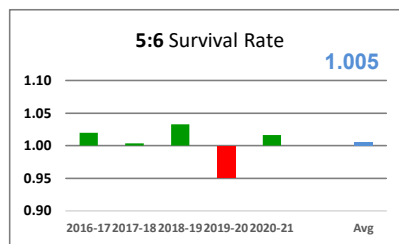
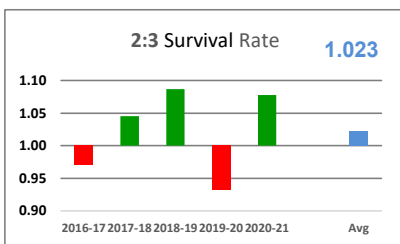
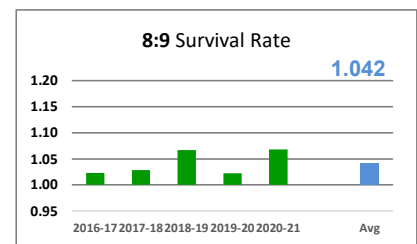
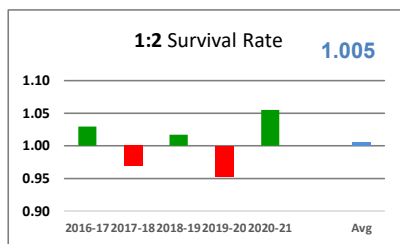
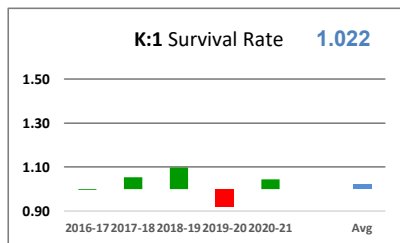


These graphs show the Grade to Grade Survival Rate (S/R) in the Fall of each year. **Green** bars indicate a S/R at or above 100%, i.e. growth from one grade level to the next. **Red** bars indicate S/Rs of less than 100%. The **Blue** bar at the far right is the Average.

For example, the Birth to Kindergarten S/R is a 6-year average of 1.004, i.e. about 104% of "Births 5 years earlier" are enrolled in Kindergarten. The K:1 S/R at 1.022 indicates that Kindergarten enrollment grows by nearly 2% to 1st Grade.

Not all Survival Rates are as consistent. The impact of the Pandemic is clearly seen in nearly all grades for the 2019-20 school year.

Grade 8 to 9 SR is the only one wherein growth from 8th Grade is always more than 100%

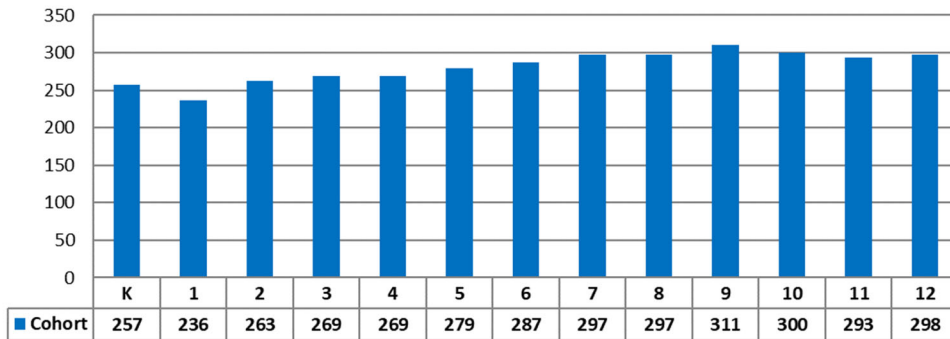




Cohort Growth

Actual & Projected Growth with New Students

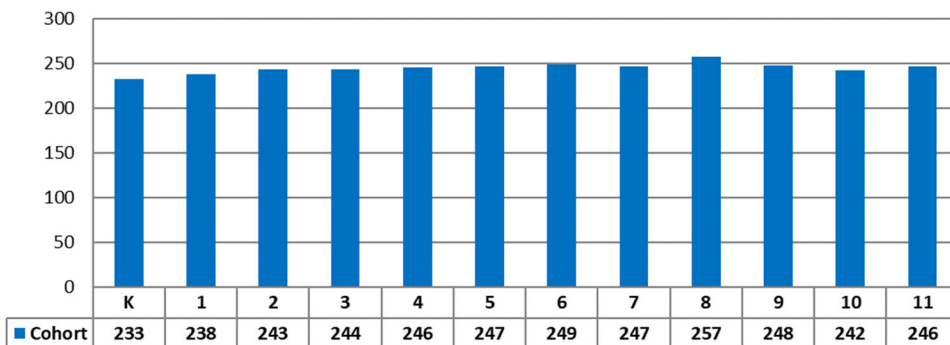
Cohort Growth: 2019 K - 2031 Gr 12



As a sample Cohort, the school Year 2019-20 Kindergarten of 257 students is followed through to 12th Grade including the students from new housing. The original 257 Student Cohort peaks at 311 students in 9th grade, a 20% increase.

Average K Cohort (233 Students) Actual & Projected Growth

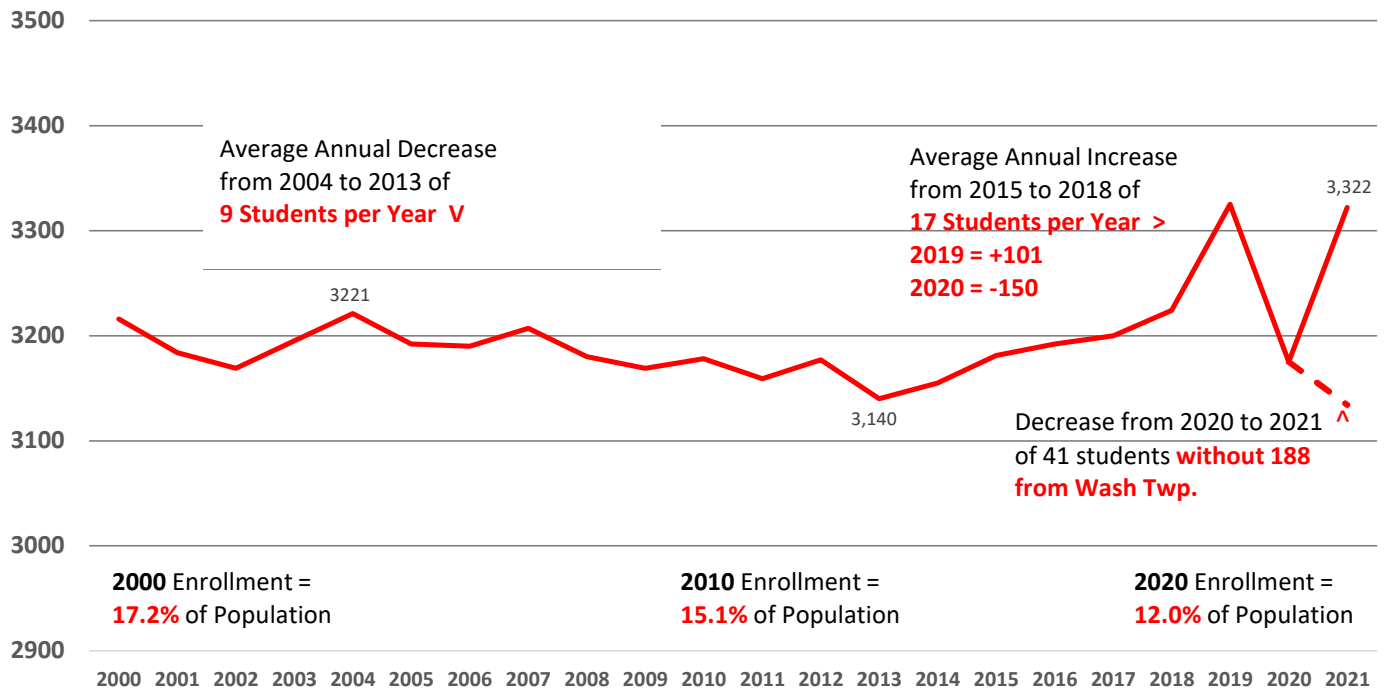
Cohort Growth: Average 233 K Students
without Students from new Housing



The 6-year average of K students in the historical period is 233 students. The above graph is that 233 student cohort moving through the district from Kindergarten to 12th grade under “natural” growth, that is without students from new housing. The averaged 233 Student Cohort peaks at 257 students in 9th grade, a 10.5% increase.

Actual Enrollments History 2000-2021

Historical Enrollment October 2000 to 2021



As a Percent of Population, Student Enrollment has been decreasing from 17.2% in year 2000 to 15.1 % in year 2010 and 12.0 % in 2020.

Annual enrollment decline over 9 years from 2004 to 2013 was erratic but averaged 9 students per year. In 2013 enrollment began to increase.

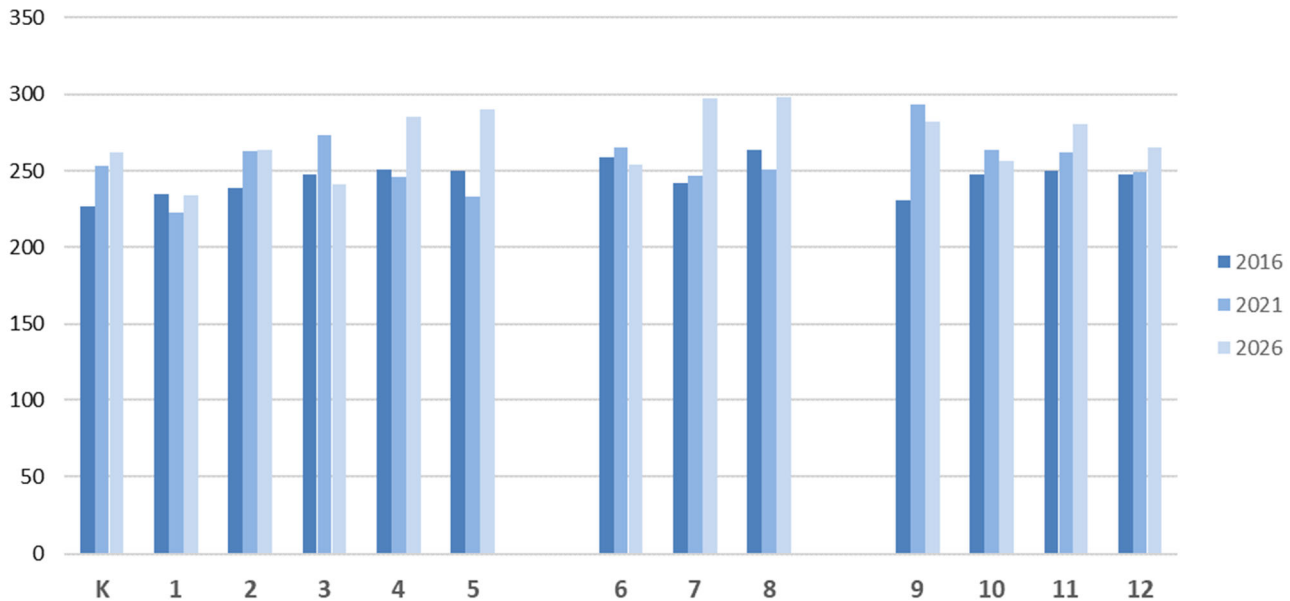
In more recent years between 2013 and 2018 enrollment increased an average of by 17 students per year. In 2019 enrollments jumped by 101, and in 2020 enrollments relapsed by 150 students.

In 2021 enrollments jumped again by 147 students with the enrollment of 188 new students from Washington Township. The short dashed line shows the enrollment decline without the added Washington Township students.

Change in Grade Level Enrollments

Actual through Projected

Grade Level Enrollment Change



	K	1	2	3	4	5	6	7	8	9	10	11	12
2016	227	235	239	248	251	250	259	242	264	231	248	250	248
2021	253	223	263	273	246	233	265	247	251	293	264	262	249
2026	262	234	264	241	285	290	254	297	298	282	256	281	266

In the Elementary Grades, K-Grade 5, only two grades were increasing in the Actual period, but in the Projected period all grade levels are increasing.

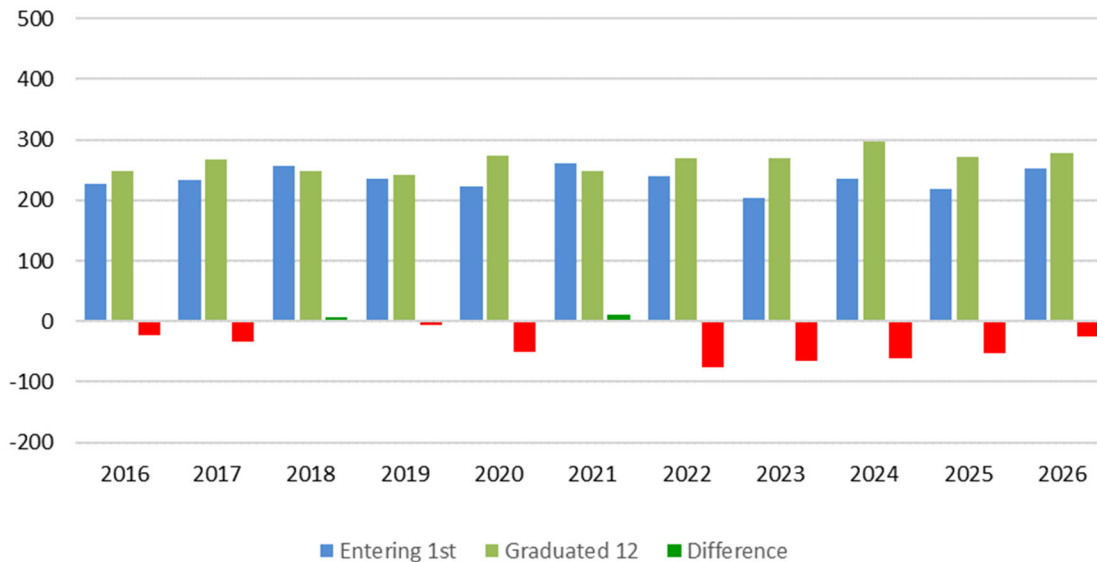
Enrollments in the middle school grades 5-8 were increasing in the Actual period except for 8th grade, but in the Projected period all grade levels are increasing.

Enrollments in the High school grades 9-12 were increasing in the Actual period for all grades, but in the Projected period only 11th and 12th grades are increasing.

Grade 12 to Grade 1 Replacement

	2016	2017	2018	2019	2020	2021	< Actual	Projected >	2022	2023	2024	2025	2026
Entering 1st	226	233	256	236	223	261			241	205	235	219	253
Graduated 12	248	267	249	241	273	249			270	270	296	271	278
Difference	-22	-34	7	-5	-50	12			-75	-66	-61	-53	-25
			Avg = -15						Avg = -56				

Grade 1 to Grade 12 Replacement

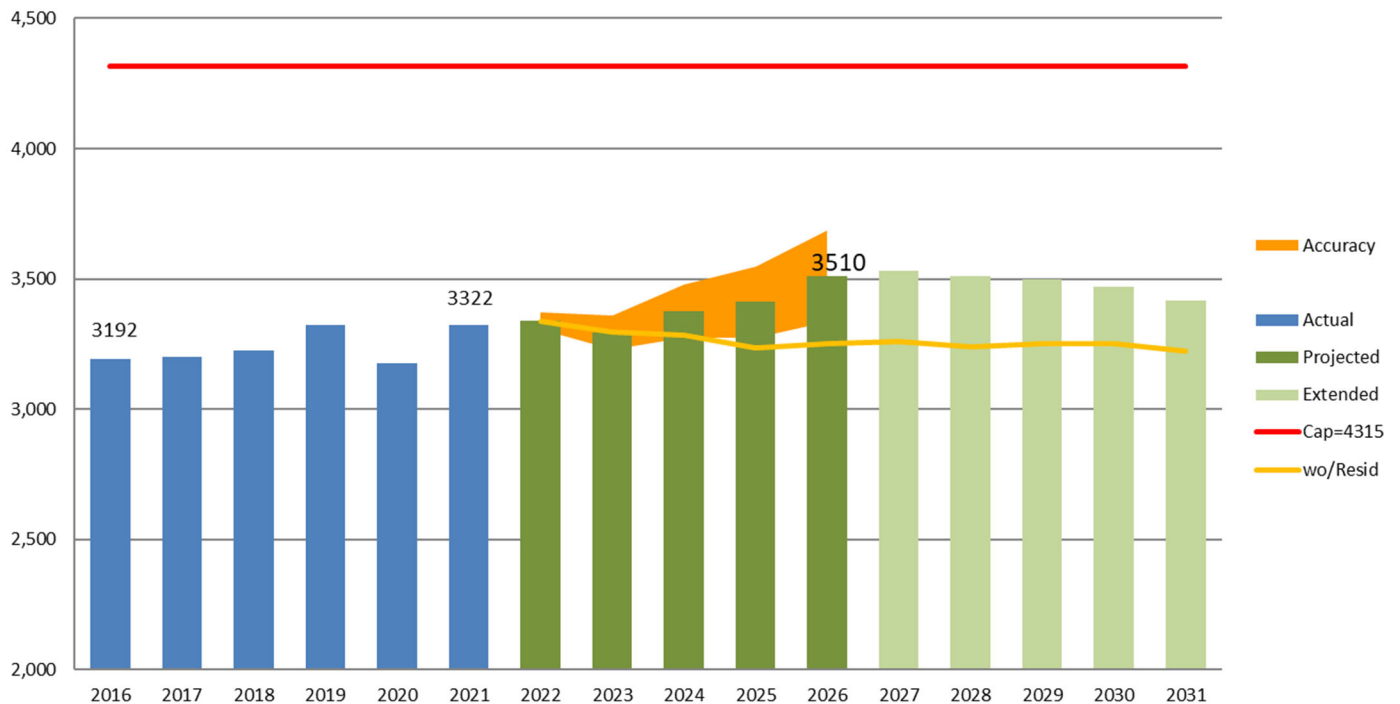


The difference between the prior year 12th Grade graduating class and the incoming Grade 1 is increasing, leading to decreasing enrollment.

In the 6 years of actual enrollment the difference ranges from +7 to -50 and averaged -15.

In the Projected period the difference is anticipated to range from -25 to -66, and average of an increased -56 students each year.

Reading the Enrollment Charts



The blue bars are the 6 years of actual enrollments from Fall 2016 to Fall 2021.

The dark green bars are the resulting 1-5 year projected enrollments in the Standard Method plus Students from New Housing projection.

The 6 to 10 year projections shown in light green are not considered accurate for facilities planning. Long-range projection counts range as high as $\pm 10\%$ in accuracy in the 10th year.

The orange colored shape is the $\pm 1\%$ per year "Cone of Accuracy" in the first 5 years of the standard projection.

The yellow line is the projected enrollment without Students from New Housing

The red line is the grade-level (building) capacity as determined by the District and/or the Pennsylvania Department of Education (PDE).

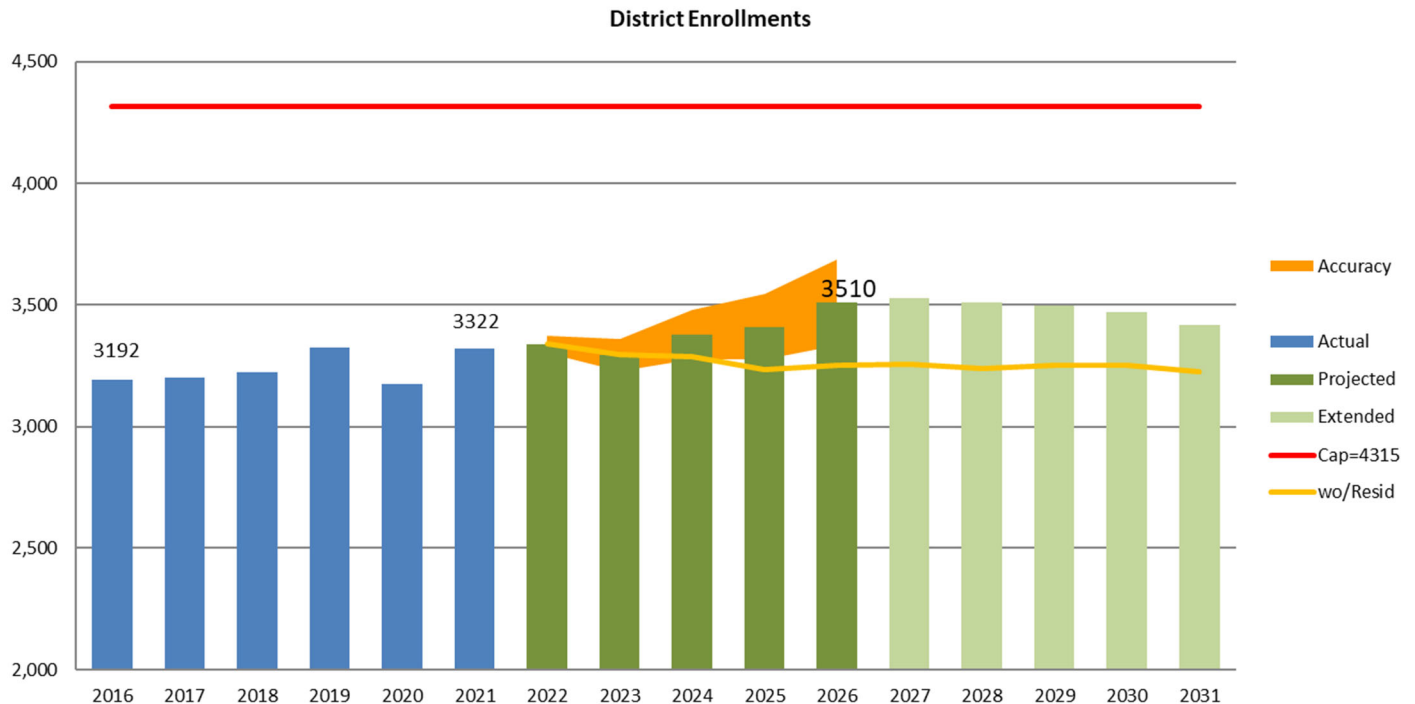
ACCURACY: Cohort Survival Enrollment Projections have an accuracy of $\pm 1\%$ per year as represented by the golden cone on the chart and establishes a 5th year range for enrollments between 7,601 and 8,401 students.

Though not shown on every chart, this is also true of the Grade Level and School based projections.

District-Wide Enrollment

The 2021 enrollment is 130 students (4.1%) higher than the 2016 enrollments at the beginning of the Actual (historical) period having increased to 3,322 students. That increase is the equivalent of 10 students per grade in the 6-year historic period.

The District averaged 3,240 students in the actual period, and will average 3,386 in the projection period.



Enrollments are projected to grow by an additional 188 students to the peak year of 2026-27 where enrollments will have increased to 3,510 students, 5.6% over the end of the Actual period. That growth includes 277 students added from new Multi-Family housing.

277 students are added from new housing, across the District in years 1-5 of the projection and an additional 55 are added in year 6 and 7.

District-wide enrollments do not exceed the District Capacity in any projection year.

		TOTAL	Average Change	%Chg
Actual	2016	3,192		
	2017	3,200		
	2018	3,224		
	2019	3,325	3,240	
	2020	3,175		
	2021	3,322	130	4.1%
Projected	2022	3,339		
	2023	3,295		
	2024	3,377	3,386	
	2025	3,411		
	2026	3,510	188	5.6%
	2027	3,529		
Extended	2028	3,509		
	2029	3,497	3,485	
	2030	3,471		
	2031	3,419	-91	-2.6%

Elementary School

Kindergarten-Grade 5

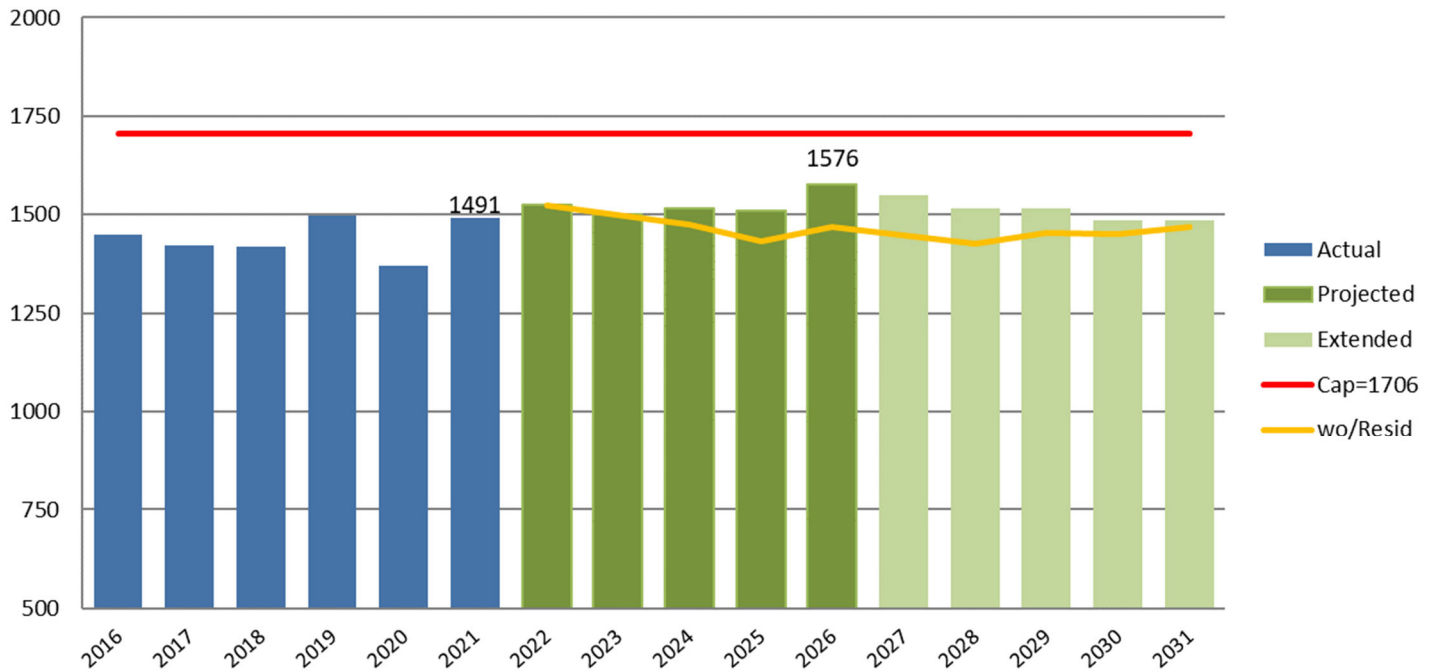
In the Actual period Elementary enrollments increased 41 students (2.8%) to a total of 1,491 students.

In the Projection period Elementary enrollments are increasing, and ends the period 85 student more than the end of the Actual period. 128 students have been added to this K-5 level projection in this 5-year period.

Elementary School enrollments do not exceed capacity in any years of the projection.

128 + 25 students are added from new housing at the K-Gr 5 level.

Elementary K-Gr 5 Enrollments



Elementary K-Grade 5 Enrollments

128 + 25 Students from new housing to Public School at the elementary level

		K-5							Period to Period	
		PK	K	1	2	3	4	5	TOTAL	Average Change
Actual	2016		227	235	239	248	251	250	1,450	
	2017		221	226	242	232	240	260	1,421	
	2018		233	233	219	253	238	244	1,420	
	2019		257	256	237	238	264	246	1,498	1,442
	2020		206	236	244	221	217	247	1,371	
	2021		253	223	263	273	246	233	1,491	41 2.8%
Projected	2022		251	259	224	269	273	248	1,524	
	2023		209	256	260	229	269	276	1,499	
	2024		243	220	265	273	236	279	1,516	1,525
	2025		222	255	229	278	280	246	1,509	
	2026		262	234	264	241	285	290	1,576	85 5.6%
	2027		235	271	238	272	244	291	1,550	
Extended	2028		234	242	273	245	274	248	1,516	
	2029		233	239	243	280	245	277	1,517	1,511
	2030		233	238	241	249	280	247	1,487	
	2031		233	238	239	246	249	283	1,487	-89 -5.7%



Middle School Grades 6-8

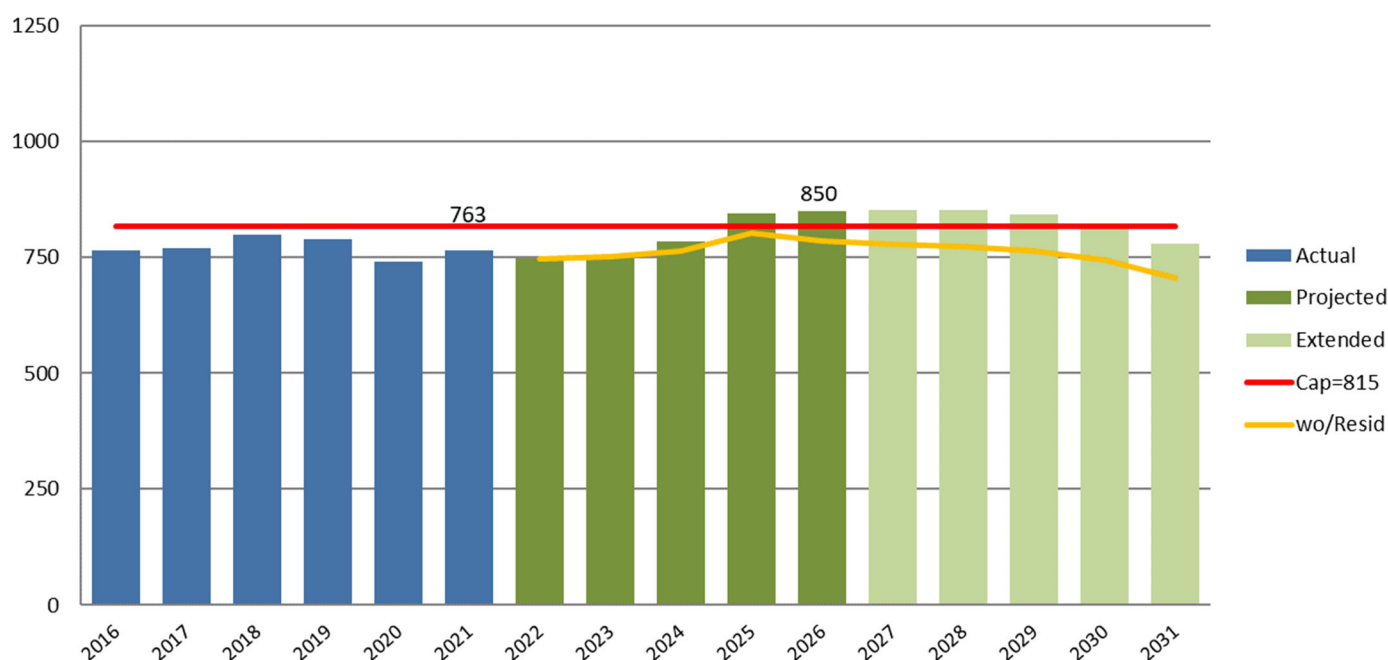
In the Actual period enrollments decreased 2 students (0.3%) to a total of 763 students by Fall 2021. In the projection period enrollments will increase by 87 students to a new high of 850 students at the end of the projection period in year 2026-27.

During the Projection period, 64+13 new students have been added from the Multi-Family housing. Enrollment will exceed Capacity in the 4th and 5th year of the projection..

Middle School enrollments exceed capacity in the 4th and 5th year of the projections.

64 + 13 students are added from new housing at the Gr 6-8 level.

Middle School Gr 6-8 Enrollments



Middle School Grade 6-8 Enrollments

		64 13 Students from new housing to Public Schools at the Middle School level.					
					Gr 6-8	Period	Period
		6	7	8	TOTAL	Average	Change
Actual	2016	259	242	264	765		
	2017	255	267	247	769		
	2018	261	269	268	798		
	2019	252	267	269	788	770	
	2020	234	241	264	739		
	2021	265	247	251	763		-2 -0.3%
Projected	2022	234	267	245	746		
	2023	250	236	265	751		
	2024	284	259	241	784	795	
	2025	287	294	264	845		
	2026	254	297	298	850		87 11.6%
Extended	2027	294	259	297	850		
	2028	294	298	258	850		
	2029	249	296	296	841	828	
	2030	278	251	294	823		
	2031	248	281	249	778		-72 -8.4%

High School Enrollment Grade 9-12

In the actual period, High School enrollments increased 91 students (9.3%) to a total of 1,068 students.

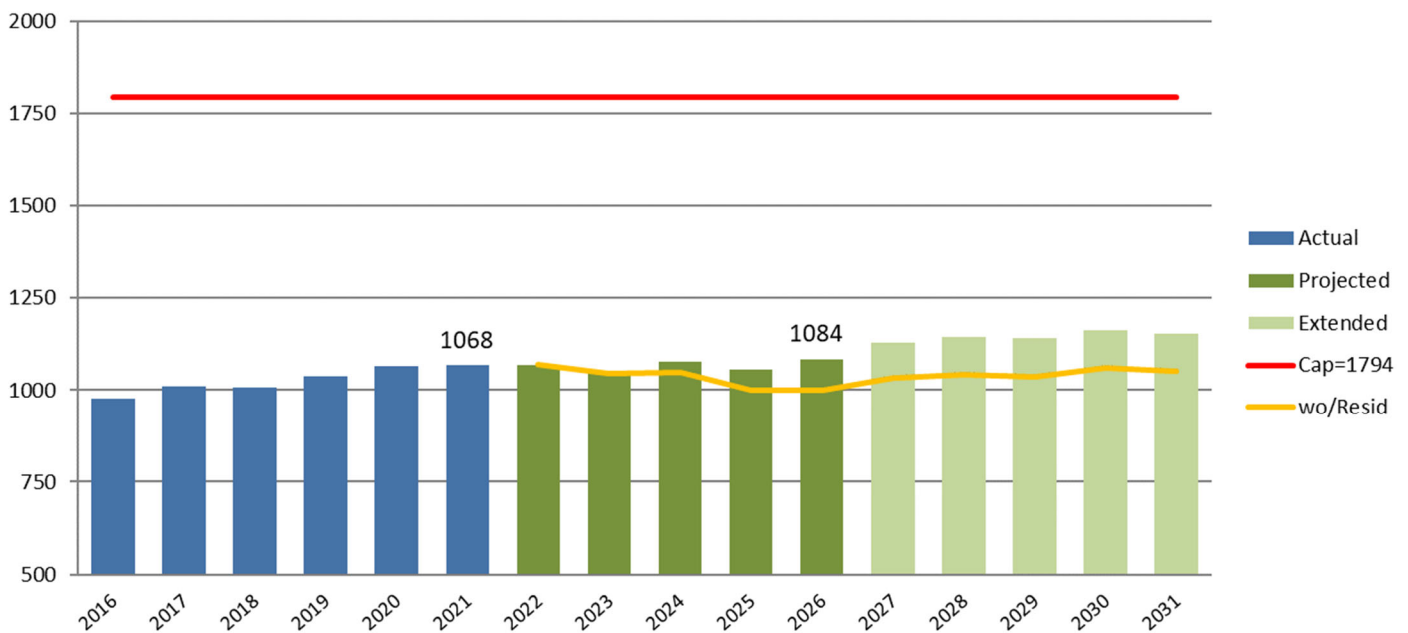
In the projection period enrollments will continue to increase by 16 students to 1,084 students (7.8%) at the end of the projection period in year 2026-27. That increase includes 85+15 students from new housing.

Enrollments do not exceed Capacity in any year.

High School enrollments which averaged 1,028 students in the Actual period, will average 1,066 students in the projection period.

85 + 17 students are added from new housing at the Gr 9-12 level.

High School Grade 9-12 Enrollments



High School Grade 9-12 Enrollments

		85 17 Students from new housing at the High School level						
		9	10	11	12	Gr 9-12 TOTAL	Period Average	Period Change
Actual	2016	231	248	250	248	977		
	2017	270	232	241	267	1,010		
	2018	254	271	232	249	1,006		
	2019	286	239	273	241	1,039	1028	
	2020	275	273	244	273	1,065		
	2021	293	264	262	249	1,068		91 9.3%
Projected	2022	261	282	258	266	1,068		
	2023	255	252	276	262	1,045		
	2024	283	253	253	288	1,077	1066	
	2025	258	280	254	265	1,057		
	2026	282	256	281	266	1,084		16 1.5%
	2027	313	274	253	288	1,129		
Extended	2028	311	304	270	259	1,143		
	2029	269	300	297	274	1,140	1145	
	2030	308	259	293	302	1,162		
	2031	306	297	253	298	1,154		69 6.1%



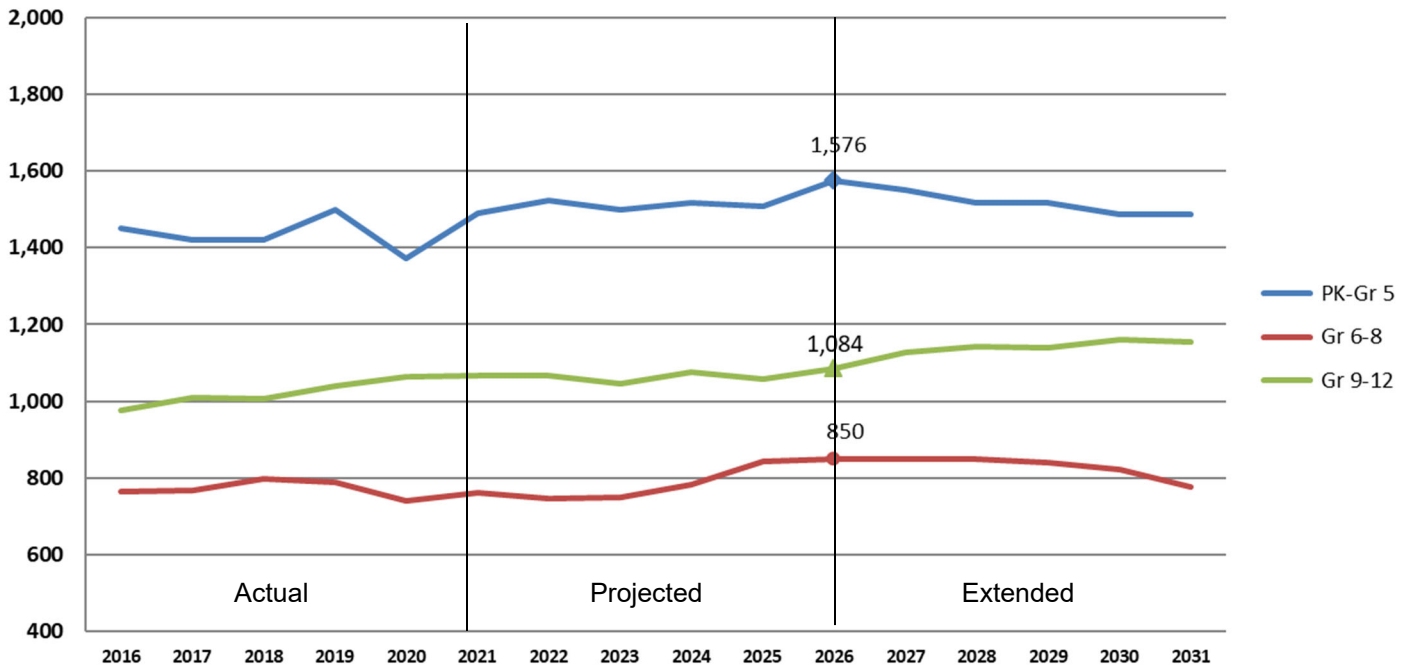
Comparative Enrollments by Grade Level Organization

		K-5	Gr 6-8	Gr 9-12	TOTAL
Actual	2016	1,450	765	977	3,192
	2017	1,421	769	1,010	3,200
	2018	1,420	798	1,006	3,224
	2019	1,498	788	1,039	3,325
	2020	1,371	739	1,065	3,175
	2021	1,491	763	1,068	3,322
Projected	2022	1,524	746	1,068	3,339
	2023	1,499	751	1,045	3,295
	2024	1,516	784	1,077	3,377
	2025	1,509	845	1,057	3,411
	2026	1,576	850	1,084	3,510
Extended	2027	1,550	850	1,129	3,529
	2028	1,516	850	1,143	3,509
	2029	1,517	841	1,140	3,497
	2030	1,487	823	1,162	3,471
	2031	1,487	778	1,154	3,419

HIGH

LOW within 5 years

Comparative Enrollments by Grade Level Organization



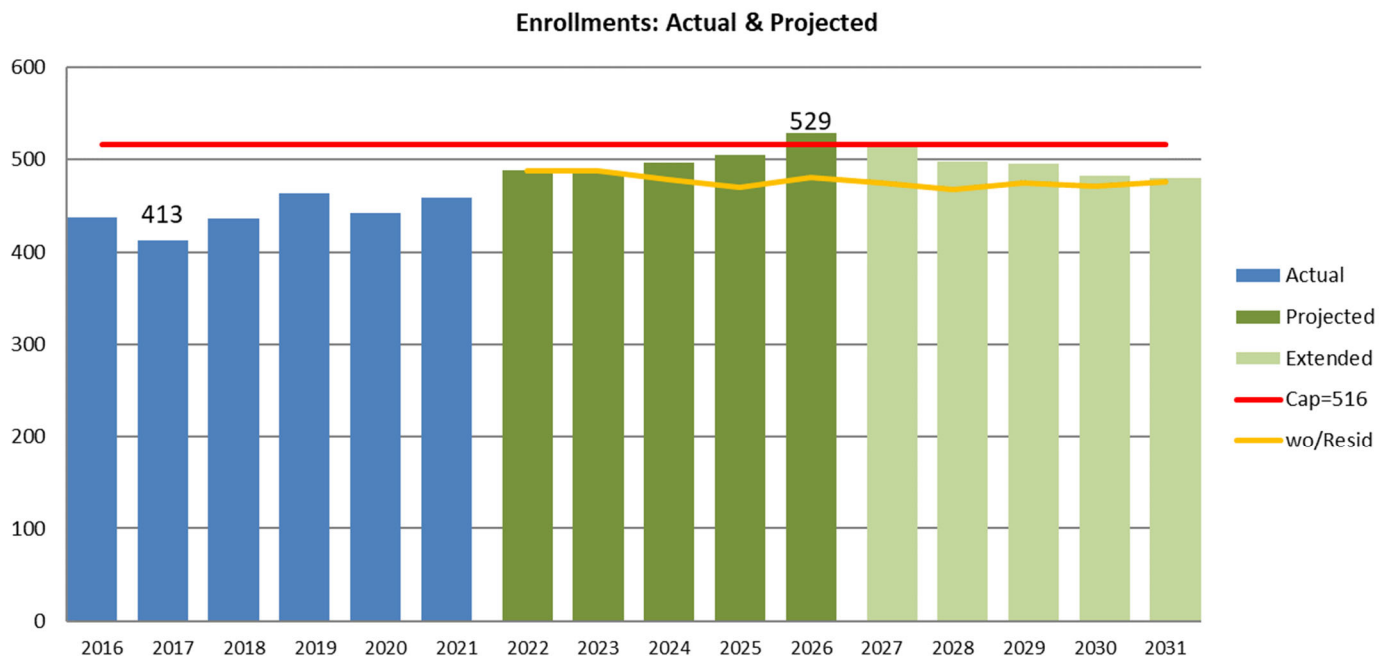
Dillsburg Elementary

Enrollments which increased 21 students in the actual period, will increase by 70 in the projection period to a high of 529 students in year 2026-27. 56 students were added from new housing to this school.

56 students from New Housing are added to this school

Sections will increase from a current 21 to a high of 23 in the projection period..

The school enrollment will exceed capacity in the 5th year of the projec-



Dillsburg Elementary School Enrollments

		K-5								
		K	1	2	3	4	5	TOTAL	Average Change	% Chg
Actual	2016	55	77	77	72	75	82	438		
	2017	55	61	74	76	70	77	413		
	2018	83	65	61	73	81	73	436		
	2019	77	92	64	67	77	87	464	442	
	2020	73	78	90	68	59	74	442		
	2021	77	74	80	91	75	62	459	21	4.8%
Projected	2022	76	84	74	83	93	78	488		
	2023	63	82	83	77	85	97	488		
	2024	75	72	85	90	82	92	497	501	
	2025	68	85	75	92	95	89	505		
	2026	80	78	88	82	98	103	529	70	14.3%
Extended	2027	70	88	78	92	84	103	514		
	2028	70	77	88	81	94	88	498		
	2029	70	77	77	91	83	98	496	494	
	2030	70	76	76	80	93	86	482		
	2031	70	76	76	79	82	97	480	-49	-9.4%

Sections

	25	25	25	30	30	30	
	K	1	2	3	4	5	Total
	3	4	4	3	3	3	20
	3	3	3	3	3	3	18
	4	3	3	3	3	3	19
	4	4	3	3	3	3	20
	3	4	4	3	2	3	19
	4	3	4	4	3	3	21
	4	4	3	3	4	3	21
	3	4	4	3	3	4	21
	3	3	4	4	3	4	21
	3	4	4	4	4	3	22
	4	4	4	3	4	4	23
	3	4	4	4	3	4	22
	3	4	4	3	4	3	21
	3	4	4	4	3	4	22
	3	4	4	3	4	3	21
	3	4	4	3	3	4	21



Northern Elementary

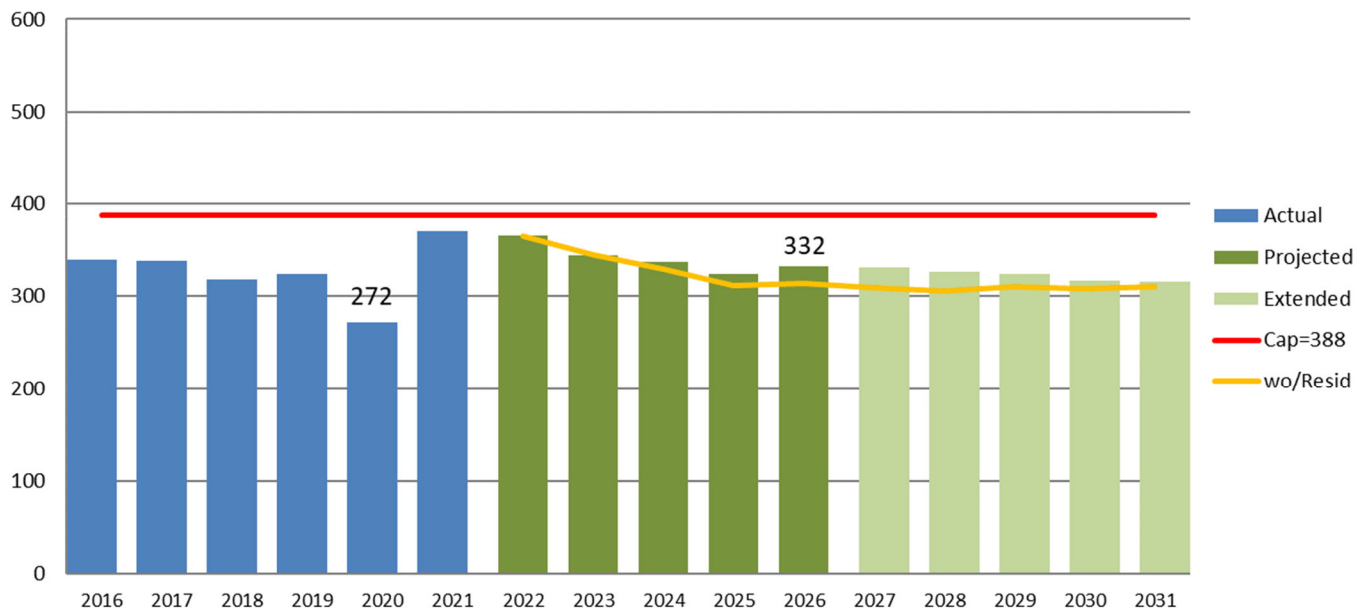
Enrollments which increased 31 in the Actual period, will decrease by 38 in the projection period to 332 students in year 2026-27. 22 + 12 students were added from new housing to this school.

22 + 12 students from New Housing are added to this school

Sections will increase from 17 to 18 at the beginning of the Projection period.

The school is under capacity in all years of the projection period.

Enrollments: Actual & Projected



Northern Elementary School

Enrollments

		K-5								
		K	1	2	3	4	5	TOTAL	Average Change	% Chg
Actual	2016	68	48	53	52	67	51	339		
	2017	68	49	50	50	52	69	338		
	2018	56	58	48	52	51	53	318		
	2019	63	48	54	49	57	53	324	327	
	2020	43	44	42	47	46	50	272		
	2021	66	54	63	68	62	57	370	31	9.1%
Projected	2022	65	54	53	64	68	61	365		
	2023	54	53	53	54	64	66	345		
	2024	63	46	54	55	55	64	337	341	
	2025	57	53	46	56	56	55	324		
	2026	68	48	53	48	57	57	332	-38	-10.4%
	2027	62	57	49	56	50	58	331		
Extended	2028	61	52	57	51	56	50	327		
	2029	60	50	51	58	50	55	325	323	
	2030	60	49	49	51	57	49	317		
	2031	60	49	49	50	51	56	316	-16	-4.9%

Sections

	25	25	25	30	30	30	
	K	1	2	3	4	5	Total
	3	2	3	2	3	2	15
	3	2	2	2	2	3	14
	3	3	2	2	2	2	14
	3	2	3	2	2	2	14
	2	2	2	2	2	2	12
	3	3	3	3	3	2	17
	3	3	3	3	3	3	18
	3	3	3	2	3	3	17
	3	2	3	2	2	3	15
	3	3	2	2	2	2	14
	3	2	3	2	2	2	14
	3	3	2	2	2	2	14
	3	3	3	2	2	2	15
	3	3	3	2	2	2	15
	3	2	2	2	2	2	13
	3	2	2	2	2	2	13



South Mountain Elementary

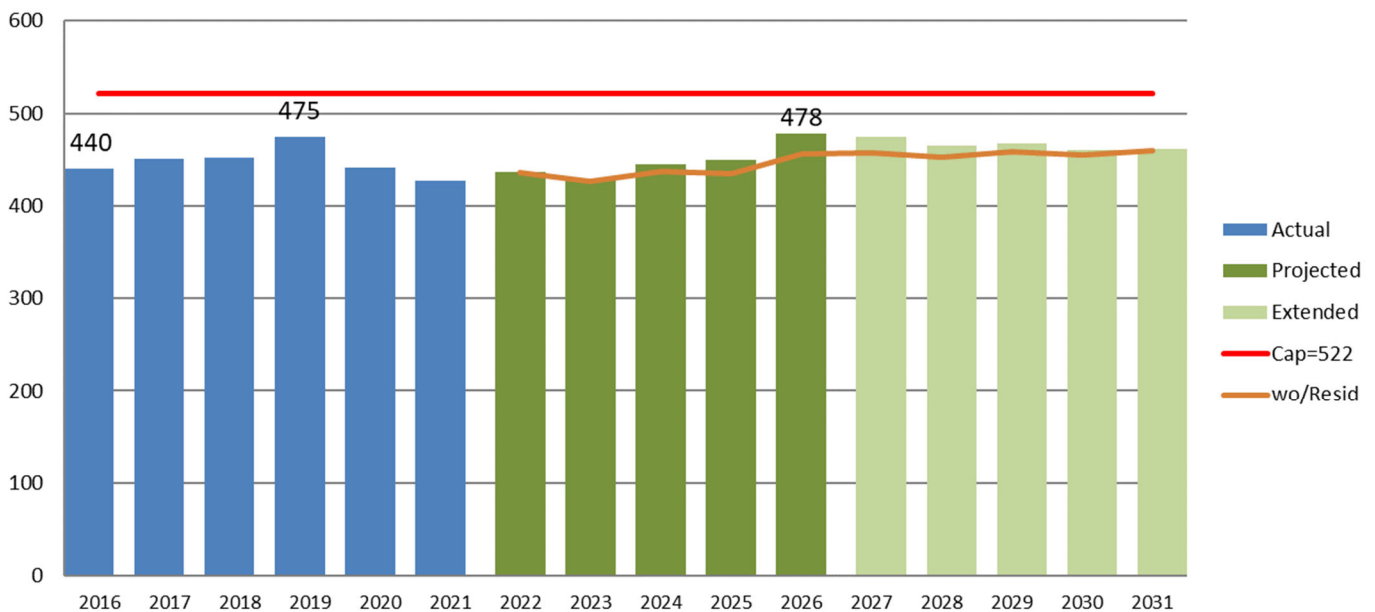
Enrollments which decreased 13 students in the historic period, will increase by 51 in the projection period to 478 students in year 2026-27. 25 students were added from new housing to this school.

25 students from New Housing are added to this school

Sections that were a recent 20 will remain 20 in the projection period.

The school is under capacity in all projected years.

Enrollments: Actual & Projected



South Mountain Elementary Scho

Enrollments		K-5							Average Change	% Chg
		K	1	2	3	4	5	TOTAL		
Actual	2016	75	77	64	78	68	78	440		
	2017	71	82	85	63	76	74	451		
	2018	66	79	80	90	63	74	452		
	2019	77	72	86	88	89	63	475	448	
	2020	58	73	71	79	78	82	441		
	2021	70	60	75	71	79	72	427	-13	-3.0%
Projected	2022	75	74	63	77	69	79	436		
	2023	62	79	77	64	75	69	427		
	2024	72	68	84	81	64	76	445	447	
	2025	66	78	72	88	80	65	449		
	2026	78	72	83	76	88	81	478	51	11.6%
Extended	2027	70	83	75	85	74	88	475		
	2028	70	74	87	77	84	74	466		
	2029	69	74	77	89	75	83	468	466	
	2030	69	73	77	79	87	74	460		
	2031	69	73	77	79	77	86	461	-17	-3.5%

Sections

	25	25	25	30	30	30	Total
K	1	2	3	4	5		
3	4	3	3	3	3	3	19
3	4	4	3	3	3	3	20
3	4	4	3	3	3	3	20
4	3	4	3	3	3	3	20
3	3	3	3	3	3	3	18
3	3	3	3	3	3	3	18
3	3	3	3	3	3	3	18
3	4	4	3	3	3	3	20
3	3	4	3	3	3	3	19
3	4	3	3	3	3	3	19
4	3	4	3	3	3	3	20
3	4	3	3	3	3	3	19
3	3	4	3	3	3	3	19
3	3	4	3	3	3	3	19
3	3	4	3	3	3	3	19



Wellsville Elementary

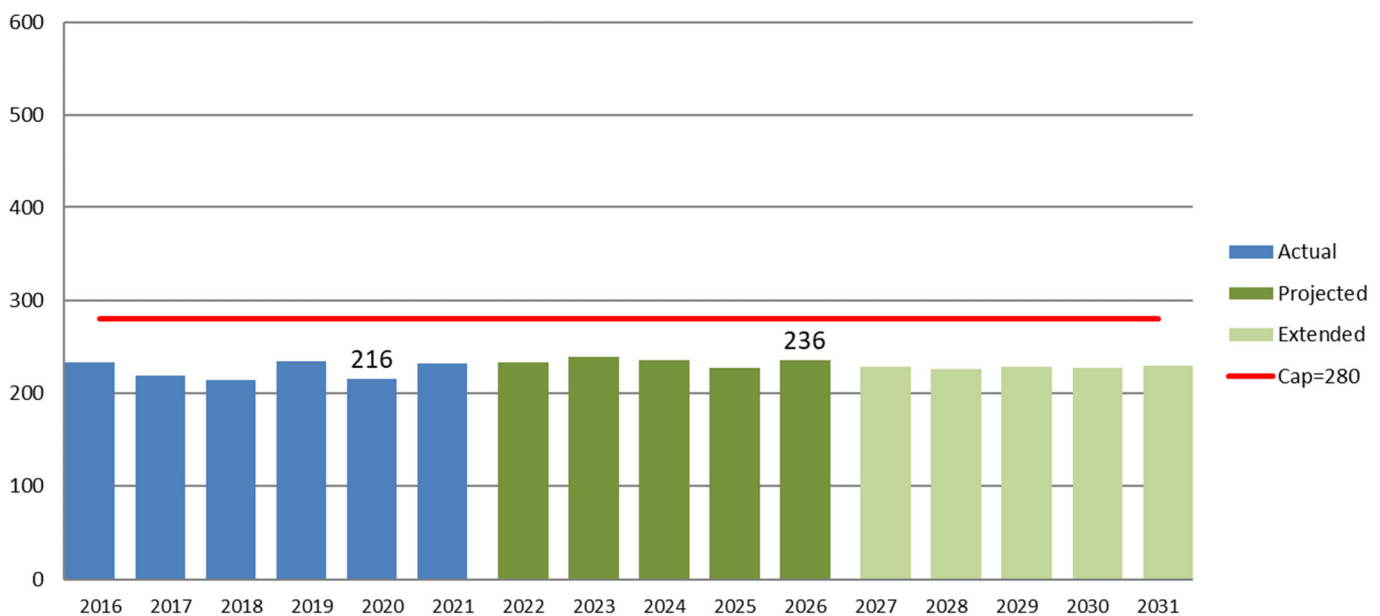
Enrollments which decreased 1 students in the Actual period, will increase by 4 in the projection period to 236 students in year 2026 -27. No students were added from new housing to this school.

0 students from New Housing are added to this school

Sections are stable at 12.

The school is under capacity in all projected years.

Enrollments: Actual & Projected



Wellsville Elementary School

Enrollments		K-5								
		K	1	2	3	4	5	TOTAL	Average Change	% Chg
Actual	2016	29	33	45	46	41	39	233		
	2017	27	34	33	43	42	40	219		
	2018	28	31	30	38	43	44	214		
	2019	40	44	33	34	41	42	234	225	
	2020	32	41	41	27	34	41	216		
	2021	40	34	44	43	29	42	232	-1	-0.4%
Projected	2022	35	47	34	45	43	30	233		
	2023	29	41	46	34	44	44	240		
	2024	33	35	41	47	34	46	236	235	
	2025	30	39	34	42	47	35	228		
	2026	36	36	39	35	42	49	236	4	1.8%
Extended	2027	33	42	36	40	35	43	229		
	2028	33	39	42	36	40	36	226		
	2029	33	39	38	43	36	41	229	228	
	2030	33	38	38	39	42	37	227		
	2031	33	38	38	39	38	44	230	-6	-2.8%

Sections

	25	25	25	30	30	30	
K	1	2	3	4	5	Total	
2	2	2	2	2	2	2	12
2	2	2	2	2	2	2	12
2	2	2	2	2	2	2	12
2	2	2	2	2	2	2	12
2	2	2	2	1	2	2	11
2	2	2	2	2	1	2	11
2	2	2	2	2	2	2	12
2	2	2	2	2	2	2	12
2	2	2	2	2	2	2	12
2	2	2	2	2	2	2	12
2	2	2	2	2	2	2	12
2	2	2	2	2	2	2	12
2	2	2	2	2	2	2	12
2	2	2	2	2	2	2	12



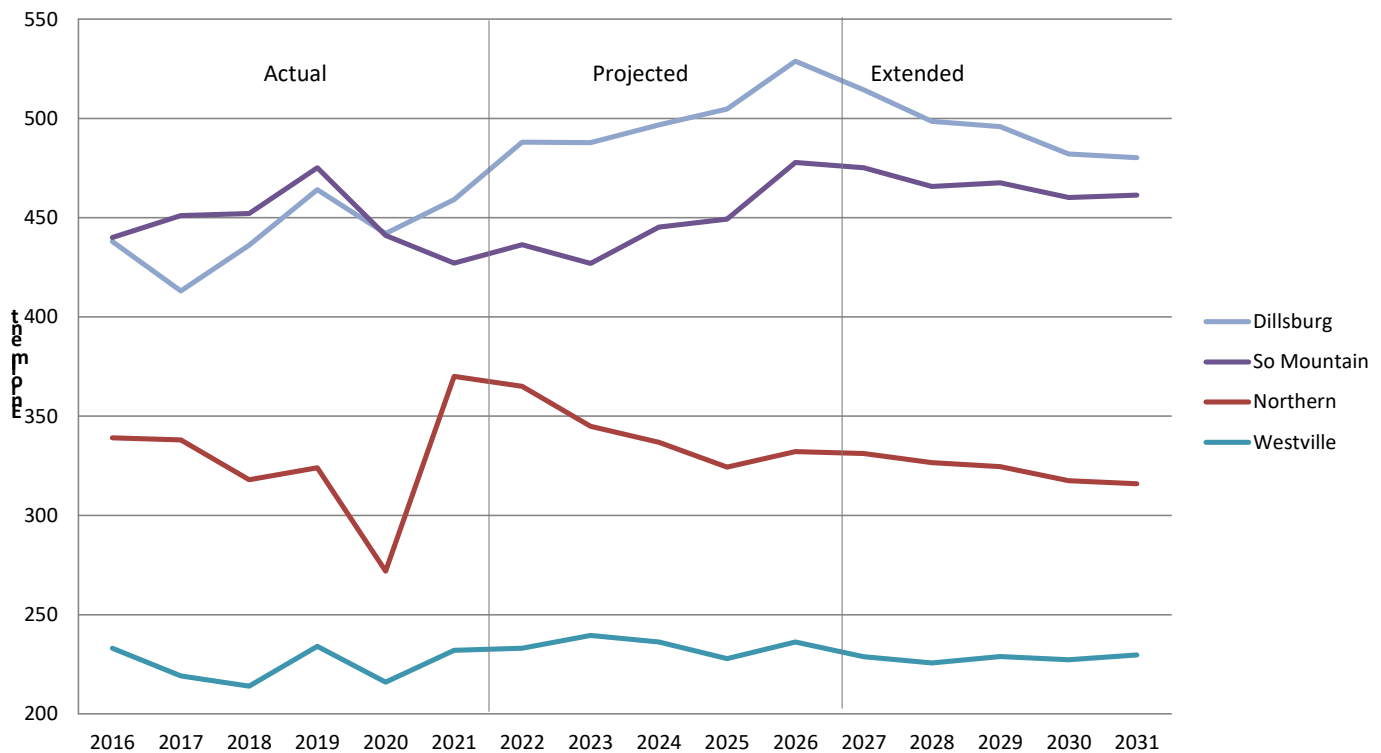
Comparative Elementary Enrollments

		Dillsburg	Northern	So Mountain	Westville
Actual	2016	438	339	440	233
	2017	413	338	451	219
	2018	436	318	452	214
	2019	464	324	475	234
	2020	442	272	441	216
	2021	459	370	427	232
Projected	2022	488	365	436	233
	2023	488	345	427	240
	2024	497	337	445	236
	2025	505	324	449	228
	2026	529	332	478	236
	2027				
Extended	2027	514	331	475	229
	2028	498	327	466	226
	2029	496	325	468	229
	2030	482	317	460	227
	2031	480	316	461	230

Actual and
Projection Periods

Low
High

Comparative Enrollments: Elementary Schools



A. Cohort Survival Worksheets

1. Standard Projection
2. Adjusted for New Housing Projection

Standard Cohort-Survival Enrollment Projection Worksheet

DISTRICT NAME: Northern York County

COUNTY: York County

DATA ISSUES: Enrollments are from the PDE Enrollment website

"s" = survival rate

Births													6th			7th			8th			6-8			6-8			6-8			9th			10th			11th			12th			9-12			9-12			9-12			PK			K-12			K-12			PK-12																																																																																																																																																																																																																																																																																																																																																																																																																																																																																																																																																																																																																																																																																																																																																																																																																																																																																																					
School	5 Sch Yrs.		K	Gr.		Gr.		Gr.		Gr.		Gr.		K-5	Subt.			SCSE			Total			SCSE			3 yrs.			4yrs.			Total			Gr.			Gr.			Gr.			Subt.			SCSE			Total			Gr.			Gr.			Gr.			Subt.			SCSE			Total			Subt.			Subt.			Total			Total																																																																																																																																																																																																																																																																																																																																																																																																																																																																																																																																																																																																																																																																																																																																																																																																																																																																																	
Year	Ago	"s"	"s"	"s"	"s"	"s"	"s"	"s"	"s"	"s"	"s"	"s"	"s"	(excl. PK)										"s"	"s"	"s"	"s"	"s"	"s"	"s"	"s"	"s"	"s"	"s"	"s"	"s"	"s"	"s"	"s"	"s"	"s"	"s"	"s"	"s"	"s"	"s"	"s"	"s"	"s"	"s"	"s"	"s"	"s"	"s"	"s"	"s"	"s"	"s"	"s"	"s"	"s"	"s"	"s"	"s"	"s"	"s"	"s"	"s"	"s"	"s"	"s"	"s"	"s"	"s"	"s"	"s"	"s"	"s"	"s"	"s"	"s"	"s"	"s"	"s"	"s"	"s"	"s"	"s"	"s"	"s"	"s"	"s"	"s"	"s"	"s"	"s"	"s"	"s"	"s"	"s"	"s"	"s"	"s"	"s"	"s"	"s"	"s"	"s"	"s"	"s"	"s"	"s"	"s"	"s"	"s"	"s"	"s"	"s"	"s"	"s"	"s"	"s"	"s"	"s"	"s"	"s"	"s"	"s"	"s"	"s"	"s"	"s"	"s"	"s"	"s"	"s"	"s"	"s"	"s"	"s"	"s"	"s"	"s"	"s"	"s"	"s"	"s"	"s"	"s"	"s"	"s"	"s"	"s"	"s"	"s"	"s"	"s"	"s"	"s"	"s"	"s"	"s"	"s"	"s"	"s"	"s"	"s"	"s"	"s"	"s"	"s"	"s"	"s"	"s"	"s"	"s"	"s"	"s"	"s"	"s"	"s"	"s"	"s"	"s"	"s"	"s"	"s"	"s"	"s"	"s"	"s"	"s"	"s"	"s"	"s"	"s"	"s"	"s"	"s"	"s"	"s"	"s"	"s"	"s"	"s"	"s"	"s"	"s"	"s"	"s"	"s"	"s"	"s"	"s"	"s"	"s"	"s"	"s"	"s"	"s"	"s"	"s"	"s"	"s"	"s"	"s"	"s"	"s"	"s"	"s"	"s"	"s"	"s"	"s"	"s"	"s"	"s"	"s"	"s"	"s"	"s"	"s"	"s"	"s"	"s"	"s"	"s"	"s"	"s"	"s"	"s"	"s"	"s"	"s"	"s"	"s"	"s"	"s"	"s"	"s"	"s"	"s"	"s"	"s"	"s"	"s"	"s"	"s"	"s"	"s"	"s"	"s"	"s"	"s"	"s"	"s"	"s"	"s"	"s"	"s"	"s"	"s"	"s"	"s"	"s"	"s"	"s"	"s"	"s"	"s"	"s"	"s"	"s"	"s"	"s"	"s"	"s"	"s"	"s"	"s"	"s"	"s"	"s"	"s"	"s"	"s"	"s"	"s"	"s"	"s"	"s"	"s"	"s"	"s"	"s"	"s"	"s"	"s"	"s"	"s"	"s"	"s"	"s"	"s"	"s"	"s"	"s"	"s"	"s"	"s"	"s"	"s"	"s"	"s"	"s"	"s"	"s"	"s"	"s"	"s"	"s"	"s"	"s"	"s"	"s"	"s"	"s"	"s"	"s"	"s"	"s"	"s"	"s"	"s"	"s"	"s"	"s"	"s"	"s"	"s"	"s"	"s"	"s"	"s"	"s"	"s"	"s"	"s"	"s"	"s"	"s"	"s"	"s"	"s"	"s"	"s"	"s"	"s"	"s"	"s"	"s"	"s"	"s"	"s"	"s"	"s"	"s"	"s"	"s"	"s"	"s"	"s"	"s"	"s"	"s"	"s"	"s"	"s"	"s"	"s"	"s"	"s"	"s"	"s"	"s"	"s"	"s"	"s"	"s"	"s"	"s"	"s"	"s"	"s"	"s"	"s"	"s"	"s"	"s"	"s"	"s"	"s"	"s"	"s"	"s"	"s"	"s"	"s"	"s"	"s"	"s"	"s"	"s"	"s"	"s"	"s"	"s"	"s"	"s"	"s"	"s"	"s"	"s"	"s"	"s"	"s"	"s"	"s"	"s"	"s"	"s"	"s"	"s"	"s"	"s"	"s"	"s"	"s"	"s"	"s"	"s"	"s"	"s"	"s"	"s"	"s"	"s"	"s"	"s"	"s"	"s"	"s"	"s"	"s"	"s"	"s"	"s"	"s"	"s"	"s"	"s"	"s"	"s"	"s"	"s"	"s"	"s"	"s"	"s"	"s"	"s"	"s"	"s"	"s"	"s"	"s"	"s"	"s"	"s"	"s"	"s"	"s"	"s"	"s"	"s"	"s"	"s"	"s"	"s"	"s"	"s"	"s"	"s"	"s"	"s"	"s"	"s"	"s"	"s"	"s"	"s"	"s"	"s"	"s"	"s"	"s"	"s"	"s"	"s"	"s"	"s"	"s"	"s"	"s"	"s"	"s"	"s"	"s"	"s"	"s"	"s"	"s"	"s"	"s"	"s"	"s"	"s"	"s"	"s"	"s"	"s"	"s"	"s"	"s"	"s"	"s"	"s"	"s"	"s"	"s"	"s"	"s"	"s"	"s"	"s"	"s"	"s"	"s"	"s"	"s"	"s"	"s"	"s"	"s"	"s"	"s"	"s"	"s"	"s"	"s"	"s"	"s"	"s"	"s"	"s"	"s"	"s"	"s"	"s"	"s"	"s"	"s"	"s"	"s"	"s"	"s"	"s"	"s"	"s"	"s"	"s"	"s"	"s"	"s"	"s"	"s"	"s"	"s"	"s"	"s"	"s"	"s"	"s"	"s"	"s"	"s"	"s"	"s"	"s"	"s"	"s"	"s"	"s"	"s"	"s"	"s"	"s"	"s"	"s"	"s"	"s"	"s"	"s"	"s"	"s"	"s"	"s"	"s"	"s"	"s"	"s"	"s"	"s"	"s"	"s"	"s"	"s"	"s"	"s"	"s"	"s"	"s"	"s"	"s"	"s"	"s"	"s"	"s"	"s"	"s"	"s"	"s"	"s"	"s"	"s"	"s"	"s"	"s"	"s"	"s"	"s"	"s"	"s"	"s"	"s"	"s"	"s"	"s"	"s"	"s"	"s"	"s"	"s"	"s"	"s"	"s"	"s"	"s"	"s"	"s"	"s"	"s"	"s"	"s"	"s"	"s"	"s"	"s"	"s"	"s"	"s"	"s"	"s"	"s"	"s"	"s"	"s"	"s"	"s"	"s"	"s"	"s"	"s"	"s"	"s"	"s"	"s"	"s"	"s"	"s"	"s"	"s"	"s"	"s"	"s"	"s"	"s"	"s"	"s"	"s"	"s"	"s"	"s"	"s"	"s"	"s"	"s"	"s"	"s"	"s"	"s"	"s"	"s"	"s"	"s"	"s"	"s"	"s"	"s"	"s"	"s"	"s"	"s"	"s"	"s"	"s"	"s"	"s"	"s"	"s"	"s"	"s"	"s"	"s"	"s"	"s"	"s"	"s"	"s"	"s"	"s"	"s"	"s"	"s"	"s"	"s"	"s"	"s"	"s"	"s"	"s"	"s"	"s"	"s"	"s"	"s"	"s"	"s"	"s"	"s"	"s"	"s"	"s"	"s"	"s"	"s"	"s"	"s"	"s"	"s"	"s"	"s"	"s"	"s"	"s"	"s"	"s"	"s"	"s"	"s"	"s"	"s"	"s"	"s"	"s"	"s"	"s"	"s"	"s"	"s"	"s"	"s"	"s"	"s"	"s"	"s"	"s"	"s"	"s"	"s"	"s"	"s"	"s"	"s"	"s"	"s"	"s"	"s"	"s"	"s"	"s"	"s"	"s"	"s"	"s"	"s"	"s"	"s"	"s"	"s"	"s"	"s"	"s"	"s"	"s"	"s"	"s"	"s"	"s"	"s"	"s"	"s"	"s"	"s"	"s"	"s"	"s"	"s"	"s"	"s"	"s"	"s"	"s"	"s"	"s"	"s"	"s"	"s"	"s"	"s"	"s"	"s"	"s"	"s"	"s"	"s"	"s"	"s"	"s"	"s"	"s"	"s"	"s"	"s"	"s"	"s"	"s"	"s"	"s"	"s"	"s"	"s"	"s"	"s"	"s"	"s"	"s"	"s"	"s"	"s"	"s"	"s"	"s"	"s"	"s"	"s"	"s"	"s"	"s"	"s"	"s"	"s"	"s"	"s"	"s"	"s"	"s"	"s"	"s"	"s"

Actual	wo Wash																																																																																																																																																																																																																																																																																																																																																																																																																																																																																																																																																																																																																																																																																																																																																																																																																																																																																																																																																																																																																																																																																																																																																																																																																																																																																																																																																																																																																									
--------	---------	--	--	--	--	--	--	--	--	--	--	--	--	--	--	--	--	--	--	--	--	--	--	--	--	--	--	--	--	--	--	--	--	--	--	--	--	--	--	--	--	--	--	--	--	--	--	--	--	--	--	--	--	--	--	--	--	--	--	--	--	--	--	--	--	--	--	--	--	--	--	--	--	--	--	--	--	--	--	--	--	--	--	--	--	--	--	--	--	--	--	--	--	--	--	--	--	--	--	--	--	--	--	--	--	--	--	--	--	--	--	--	--	--	--	--	--	--	--	--	--	--	--	--	--	--	--	--	--	--	--	--	--	--	--	--	--	--	--	--	--	--	--	--	--	--	--	--	--	--	--	--	--	--	--	--	--	--	--	--	--	--	--	--	--	--	--	--	--	--	--	--	--	--	--	--	--	--	--	--	--	--	--	--	--	--	--	--	--	--	--	--	--	--	--	--	--	--	--	--	--	--	--	--	--	--	--	--	--	--	--	--	--	--	--	--	--	--	--	--	--	--	--	--	--	--	--	--	--	--	--	--	--	--	--	--	--	--	--	--	--	--	--	--	--	--	--	--	--	--	--	--	--	--	--	--	--	--	--	--	--	--	--	--	--	--	--	--	--	--	--	--	--	--	--	--	--	--	--	--	--	--	--	--	--	--	--	--	--	--	--	--	--	--	--	--	--	--	--	--	--	--	--	--	--	--	--	--	--	--	--	--	--	--	--	--	--	--	--	--	--	--	--	--	--	--	--	--	--	--	--	--	--	--	--	--	--	--	--	--	--	--	--	--	--	--	--	--	--	--	--	--	--	--	--	--	--	--	--	--	--	--	--	--	--	--	--	--	--	--	--	--	--	--	--	--	--	--	--	--	--	--	--	--	--	--	--	--	--	--	--	--	--	--	--	--	--	--	--	--	--	--	--	--	--	--	--	--	--	--	--	--	--	--	--	--	--	--	--	--	--	--	--	--	--	--	--	--	--	--	--	--	--	--	--	--	--	--	--	--	--	--	--	--	--	--	--	--	--	--	--	--	--	--	--	--	--	--	--	--	--	--	--	--	--	--	--	--	--	--	--	--	--	--	--	--	--	--	--	--	--	--	--	--	--	--	--	--	--	--	--	--	--	--	--	--	--	--	--	--	--	--	--	--	--	--	--	--	--	--	--	--	--	--	--	--	--	--	--	--	--	--	--	--	--	--	--	--	--	--	--	--	--	--	--	--	--	--	--	--	--	--	--	--	--	--	--	--	--	--	--	--	--	--	--	--	--	--	--	--	--	--	--	--	--	--	--	--	--	--	--	--	--	--	--	--	--	--	--	--	--	--	--	--	--	--	--	--	--	--	--	--	--	--	--	--	--	--	--	--	--	--	--	--	--	--	--	--	--	--	--	--	--	--	--	--	--	--	--	--	--	--	--	--	--	--	--	--	--	--	--	--	--	--	--	--	--	--	--	--	--	--	--	--	--	--	--	--	--	--	--	--	--	--	--	--	--	--	--	--	--	--	--	--	--	--	--	--	--	--	--	--	--	--	--	--	--	--	--	--	--	--	--	--	--	--	--	--	--	--	--	--	--	--	--	--	--	--	--	--	--	--	--	--	--	--	--	--	--	--	--	--	--	--	--	--	--	--	--	--	--	--	--	--	--	--	--	--	--	--	--	--	--	--	--	--	--	--	--	--	--	--	--	--	--	--	--	--	--	--	--	--	--	--	--	--	--	--	--	--	--	--	--	--	--	--	--	--	--	--	--	--	--	--	--	--	--	--	--	--	--	--	--	--	--	--	--	--	--	--	--	--	--	--	--	--	--	--	--	--	--	--	--	--	--	--	--	--	--	--	--	--	--	--	--	--	--	--	--	--	--	--	--	--	--	--	--	--	--	--	--	--	--	--	--	--	--	--	--	--	--	--	--	--	--	--	--	--	--	--	--	--	--	--	--	--	--	--	--	--	--	--	--	--	--	--	--	--	--	--	--	--	--	--	--	--	--	--	--	--	--	--	--	--	--	--	--	--	--	--	--	--	--	--	--	--	--	--	--	--	--	--	--	--	--	--	--	--	--	--	--	--	--	--	--	--	--	--	--	--	--	--	--	--	--	--	--	--	--	--	--	--	--	--	--	--	--	--	--	--	--	--	--	--	--	--	--	--	--	--	--	--	--	--	--	--	--	--	--	--	--	--	--	--	--	--	--	--	--	--	--	--	--	--	--	--	--	--	--	--	--	--	--	--	--	--	--	--	--	--	--	--	--	--	--	--	--	--	--	--	--	--	--	--	--	--	--	--	--	--	--	--	--	--	--	--	--	--	--	--	--	--	--	--	--	--	--	--	--	--	--	--	--	--	--	--	--	--	--	--	--	--	--	--	--	--	--	--	--	--	--	--	--	--	--	--	--	--	--	--	--	--	--	--	--	--	--	--	--	--	--	--	--	--	--	--	--	--	--	--	--	--	--	--	--	--	--	--	--	--	--	--	--	--	--	--	--	--	--	--	--	--	--	--	--	--	--	--	--	--	--	--	--	--	--	--	--	--	--	--	--	--	--	--	--	--	--	--	--	--	--	--	--	--	--	--	--	--	--	--	--	--	--	--	--	--	--	--	--	--	--	--	--	--	--	--	--	--	--	--	--	--	--	--	--	--	--	--	--	--	--	--	--	--	--	--	--	--	--	--	--	--	--	--	--	--	--	--	--	--	--	--	--	--	--	--	--	--	--	--	--	--	--	--	--	--	--	--	--	--	--	--	--	--	--	--	--	--	--	--	--	--	--	--	--	--	--	--	--	--	--	--	--	--	--	--	--	--	--	--	--	--	--	--	--	--	--	--	--	--	--	--	--	--	--	--	--	--	--	--	--	--	--	--	--	--	--	--	--	--	--	--	--	--	--	--	--	--	--	--	--	--	--	--	--	--	--	--	--	--	--	--	--	--	--	--	--	--	--	--	--	--	--	--	--	--	--	--	--	--	--	--	--	--	--	--	--	--	--	--	--	--	--	--	--	--	--	--	--	--	--	--	--	--	--	--	--	--	--	--	--	--	--	--	--	--	--	--	--	--	--	--	--	--	--	--	--	--	--	--	--	--	--	--	--	--	--	--	--	--

Change # Students	41																	-2			-2			91			91			130		
Change % Students	3%																	0%			0%			9%			9%			4%		

5-YR PROJECTIONS																											1068	0	1068	0	3339	3339	3339
2022-23	250	1.004		251	259	224	269	273	248	1524	0	1524	0	0	0	1524	234	267	245	746	0	746	261	282	258	266	1068	0	1068	0	3339	3339	3339
2023-24	208	1.004		209	256	260	229	269	276	1499	0	1499	0	0	0	1499	250	236	265	751	0	751	255	252	276	262	1045	0	1045	0	3295	3295	3295
2024-25	235	1.004		236	213	258	266	229	272	1474	0	1474	0	0	0	1474	277	252	234	763	0	763	276	246	246	281	1049	0	1049	0	3285	3285	3285
2025-26	214	1.004		215	241	214	264	266	232	1431	0	1431	0	0	0	1431	273	280	250	802	0	802	244	266	240	250	1000	0	1000	0	3234	3234	3234
2026-27	254	1.004		255	220	242	219	264	269	1468	0	1468	0	0	0	1468	233	275	277	785	0	785	260	235	260	244	999	0	999	0	3253	3253	3253

Change # Students	-23																	22			22			-69			-69			-69		
Change % Students	-2%																	3%			3%			-6%			-6%			-2.1%		

KEY to Number Colors

99

Standard number with no modifications to methodology

99

Provisional, but uncertified births from the NJ Department of Health

99

Births projected as an average of the prior 6 years, including provisional data...and projected students resulting from this "less accurate" average

99

Students per Grade Level added for residential development

The above information is prepared and certified by a qualified demographer.

Firm Name:

Sundance Associates 117 Greenvale Ct. Cherry Hill NJ 08034


Name:

George B. Sundell Tel 856-755-0174 Email: GSundell@sundanceassoc.com

Signature:

George B Sundell

Date: July 10, 2022



6-10 YR PROJECTIONS	NOT CONSIDERED RELIABLE																										1033	0	1033	0	3258	3258	3258
2027-28	232	1.004		233	261	221	248	219	266	1447	0	1447	0	0	0	1447	270	235	273	778	0	778	289	251	230	264	1033	0	1033	0	3258	3258	3258
2028-29	232	1.004		233	238	262	226	248	222	1427	0	1427	0	0	0	1427	268	272	233	772	0	772	284	278	245	233	1041	0	1041	0	3241	3241	3241
2029-30	232	1.004		233	238	239	268	226	250	1453	0	1453	0	0	0	1453	223	270	270	762	0	762	242	274	272	249	1037	0	1037	0	3253	3253	3253
2030-31	232	1.004		233	238	239	244	268	228	1450	0	1450	0	0	0	1450	252	225	267	744	0	744	281	234	268	276	1059	0	1059	0	3252	3252	3252
2031-32	232	1.004		233	238	239	244	245	271	1469	0	1469	0	0	0	1469	229	254	223	705	0	705	279	271	228	272	1050	0	1050	0	3224	3224	3224

Change # Students	1																	-80			-80			51			51			-28		
Change % Students	0%																	-11%			-11%			5%			5%			-1%		

Adjusted for Impact of New Housing Cohort-Survival Enrollment Projection Worksheet - District

DISTRICT NAME: **Northern York County**

COUNTY: **York County**

FALL REPORT AND	Enrollments are from the PDE Enrollment website
-----------------	---

"s" = survival rate

[illegible]

V to 2 decimal places

[illegible]

Change # Students

Change % Students

6-10-YR PROJECTIONS PLUS NEW HOUSING NOT CONSIDERED RELIABLE							
+ Resid	3	3	3	3	3	3	16
2027-28	235	271	238	272	244	291	1550
	1.022		1.005		1.023		1.001
+ Resid	2	2	2	2	2	2	9
2028-29	234	242	273	245	274	248	1516
	1.022		1.005		1.023		1.001
+ Resid	0	0	0	0	0	0	0
2029-30	233	239	243	280	245	277	1517
	1.022		1.005		1.023		1.001
+ Resid	0	0	0	0	0	0	0
2030-31	233	238	241	249	280	247	1487
	1.022		1.005		1.023		1.001
+ Resid	0	0	0	0	0	0	0
2031-32	233	238	239	246	249	283	1487

3	3	3	8	0
294	259	297	850	0
1.005		1.009		0.991
2	2	2	5	0
294	298	258	850	0
1.005		1.009		0.991
0	0	0	0	0
249	296	296	841	0
1.005		1.009		0.991
0	0	0	0	0
278	251	294	823	0
1.005		1.009		0.991
0	0	0	778	0
		13		

3	3	3	3	11
313	274	253	288	1129
1.042		0.964		0.977
2	2	2	2	6
311	304	270	259	1143
1.042		0.964		0.977
0	0	0	0	0
269	300	297	274	1140
1.042		0.964		0.977
0	0	0	0	0
308	259	293	302	1162
1.042		0.964		0.977
0	0	0	0	0
306	297	253	298	1154
		17		

0	3529	3529	3529
0	3509	3509	3509
0	3497	3497	3497
0	3471	3471	3471
0	3419	3419	3419

Change # Students

Change % Students

KEY to Number Colors

- | | |
|----|---|
| 99 | Standard number with no modifications to methodology |
| 99 | Provisional, but uncertified births from the PA Department of Health |
| 99 | Births projected as an average of the prior 6 years, including provisional data...and projected students resulting from this "less accurat" average |
| 99 | Students per Grade Level added for residential development |
| 99 | Cumulative number of special education students to be brought back in-district, included in the count below it |

The above information is prepared and certified by a qualified demographer.

Firm Name: Sundance Associates 117 Greenvale Ct. Cherry Hill NJ 08034

Name: George B. Sundell Tel 856-755-0174 Email: GSundell@sundanceassoc.com

Signature: Date: July 10, 2022

