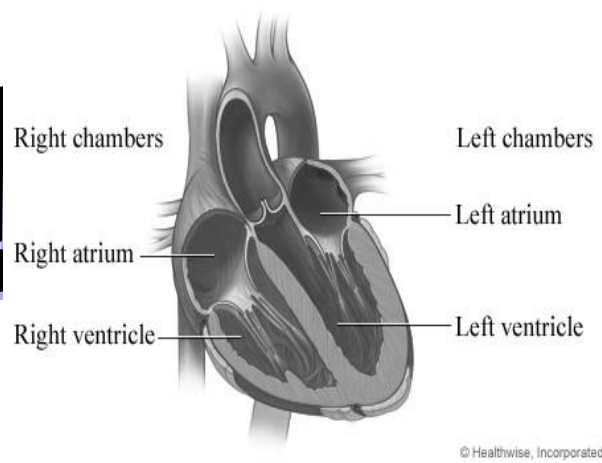


Name: \_\_\_\_\_

# CIRCULATORY SYSTEM NOTES!



## The Circulatory System: Outline

### I. Purpose of Circulatory System

The purpose To transport various nutrients and waste products around the body



### II. The Heart

1. There are 4 chambers of the heart

A. Right Atrium B. Right Ventricular C. Left Atrium D. Left Ventricular

2. Answer the following questions during the movie

In what order does the blood travel through all four chambers of the heart?

Right Atrium, Right Ventricular, Left Atrium, and Left Ventricular

What does the blood give off to the lungs? CO<sub>2</sub> What does it pick up? O<sub>2</sub>

What is the largest artery in the body that all the blood passes through before going to the rest of the body? aorta

3. Valves are important because they keep blood from flowing backwards.

4. The heart is controlled by a bundle of nerves called the pacemaker.

5. When you measure your pulse what are you measuring? the rate your heart is contracting  
or "beating"

### III. The Pipelines

Arteries carry oxygen rich blood to the body.

Capillaries deliver oxygen to every cell and pick up the waste products.

What are the materials that get delivered? O<sub>2</sub> and nutrients.

What are the waste products that get picked up? CO<sub>2</sub>.

Veins bring the oxygen deprived but carbon dioxide loaded blood back to the heart.

Arteries have smooth muscle inside of them...why?!!! To help them dilate or contract depending on what the body is doing

#### IV. The Circuit

Pulmonary Circuit - Blood moves from the heart to the lungs and back to the heart.

Systemic Circuit - Blood then travels to all the cells of the body and returns to the heart.

#### V. Blood

1. Major components of blood are red blood cells, white blood cells, platelets, and plasma.
2. Red blood cells carry oxygen and carbon dioxide in their hemoglobin to all parts of the body.
3. White blood cells attack invaders and are a part of the immune system.
4. Platelets aid in the clotting process to stop bleeding.
5. Plasma transports dissolved nutrients and waste.

