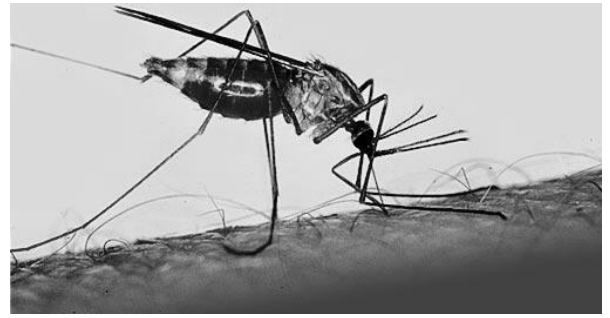


Name: \_\_\_\_\_

# Malaria



Answer the following questions while watching the clip introducing malaria

1. How do humans get malaria? by being bitten by a mosquito carrying Plasmodium spores
2. How do mosquitoes get the *Plasmodium* parasite? by biting a human with malaria
3. In what organ do the *Plasmodium* spores head to after entering a human? liver
4. In what continent does malaria affect the most people? Africa

Answer these questions during the powerpoint

5. What is malaria? an infectious disease caused by the parasite plasmodium that is potentially fatal
6. Malaria is called the “stealer of dreams” Because?
  - a. There are around 500,000,000 cases of malaria per year.
  - b. Is responsible for 3,000,000 deaths per year.
  - c. One child dies in Africa from malaria every 30 seconds.
7. What are the symptoms of malaria? flu-like symptoms, fever, chills, more severe cases can lead to death in 3 weeks
8. Write down the notes about the life cycle of *Plasmodium*.
  - a. 1<sup>st</sup> step person is bitten by a mosquito infected with the Plasmodium protist
  - b. 2<sup>nd</sup> step the Plasmodium cells infect the human's liver. They grow and change
  - c. 3<sup>rd</sup> step This new form can infect normal red blood cells, causing the cell to burst after they reproduce over and over again.
  - d. 4<sup>th</sup> step An uninfected mosquito can become infected by biting a human that carries the plasmodium protist
9. What are the three common treatments? mosquito nets, insecticide, medicine

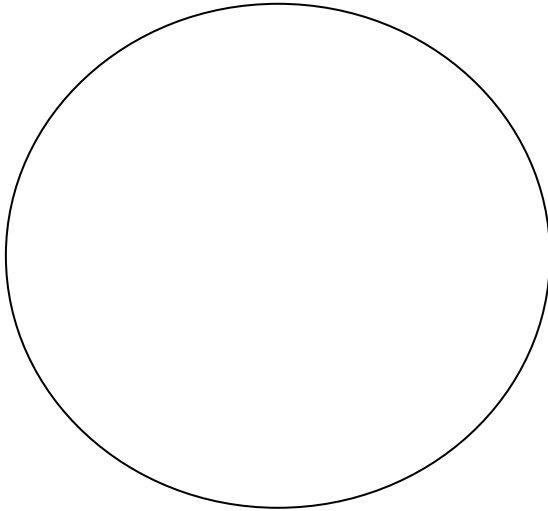
10. What is sickle cell anemia? \_\_an inherited genetic mutation where red blood cells are deformed and don't carry oxygen as well\_\_

11. Why would sickle-cell anemia and malaria occur most often in the same locations?

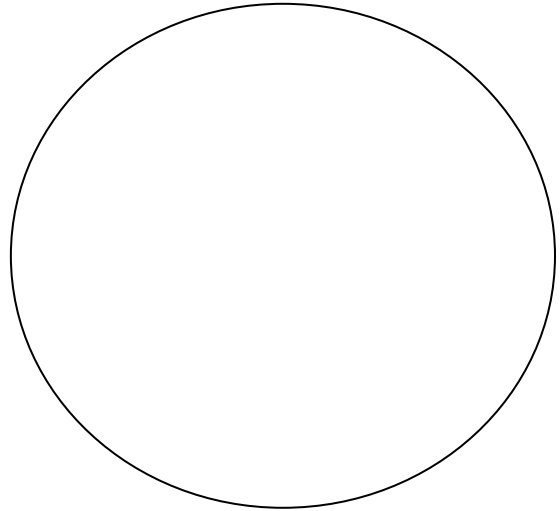
\_\_Sickle-cell gives a person immunity to malaria so it is more popular in malaria stricken places. Their ancestors developed this condition to combat malaria. Those people with Sickle-cell have a better chance to survive until the age that they can have children and pass on their Sickle-cell gene to their offspring\_\_

Lab work!

Regular Blood Smear



Blood Sample infected with *Plasmodium*



In a sentence compare and contrast the two blood smears, be as detailed as possible!

---

## Homework!

1. Why is it important to learn about malaria even though it is not found in America? \_\_\_\_\_

---

---

2. Turn the four steps of *Plasmodium* life cycle into a nice, flowing paragraph, including all details! \_\_\_\_\_

---

---

---

---