

Name \_\_\_\_\_

Date \_\_\_\_\_ Period \_\_\_\_\_

### Kingdom Protista – Study Guide

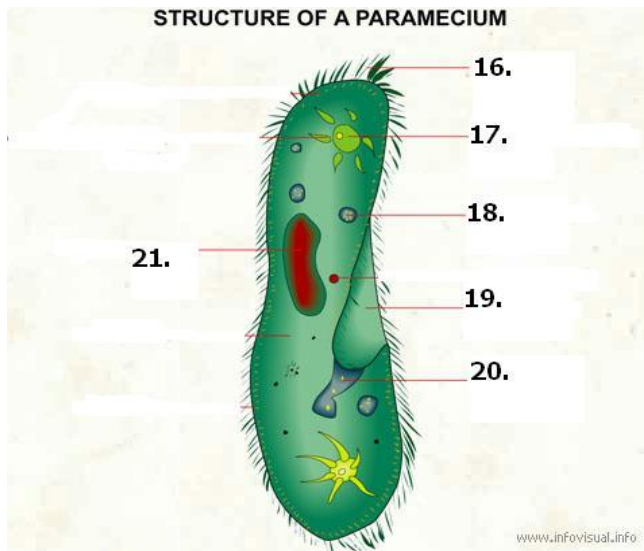
Directions: Answer the following questions. Review your answers and your vocabulary to study for your quiz.

1. What Kingdom do zooflagellates belong to? Why are they included in this Kingdom?  
zooflagellates belong to Kingdom Protista because they are single-celled organisms that contain a nucleus
2. Which animallike protist moves by extending its cell membrane and cytoplasm? What is this appendage called?  
Sarcodines (Amoeba) move by extending their pseudopods or "false feet"
3. Protists that have small hairlike projections on the outside of their cells are called Ciliates .
4. The group of animallike protists in which all members are parasites are the Sporozoans .
5. A long, thin, whip-like structure that propels Euglena is called the flagella .
6. The most widespread disease that sporozoans cause among humans is malaria .
7. Many toothpastes contain the ground up shells of plantlike protists called diatoms .
8. Red tides are caused by rapid reproduction of dinoflagellates .
9. Describe a euglena contains chloroplasts, an eyespot, and two flagella .
10. What do Paramecium eat? bacteria

*Fill in the blank.*

11. What does paramecium use to move? cilia
12. What does Euglena use to make food?  
chloroplasts sunlight
13. What major contribution do plant like protists make to the Earth? oxygen
14. Where does an amoeba digest its food?  
cytoplasm food vacuoles in it's
15. Will a euglena move towards or away from bright light? towards

Use the diagram below to label the parts.



Write the word from the bank on the left

- |   |                                |
|---|--------------------------------|
| Food Vacuole  | 16. <u>cilia</u>               |
| Cilia   | 17. <u>contractile vacuole</u> |
| Contractile Vacuole   | 18. <u>food vacuole</u>        |
| Gullet  | 19. <u>oral groove</u>         |
| Oral Groove   | 20. <u>gullet</u>              |
| Nucleus   | 21. <u>nucleus</u>             |
| 22. Organisms that can make their own food are called                           | <u>autotrophs</u> .            |
| 23. The green food-making structures found in plant like protists are called    | <u>chloroplasts</u> .          |
| 24. An organism that lives on or in a host organism and harms it is called a(n) | <u>parasite</u> .              |
| 25. Sketch below an amoeba, labeling the psuedopod and nucleus.                 |                                |